

Product datasheet for **TP762162**

Complement Component 6 (C6) (NM_000065) Human Recombinant Protein

Product data:

Product Type:	Recombinant Proteins
Description:	Purified recombinant protein of Human complement component 6 (C6), transcript variant 1, Thr176-Gln522, with N-terminal His tag, expressed in E.coli, 50ug
Species:	Human
Expression Host:	E. coli
Expression cDNA Clone or AA Sequence:	A DNA sequence encoding the region(Thr176-Gln522) of C6
Tag:	N-His
Predicted MW:	38.8 kDa
Concentration:	>0.05 µg/µL as determined by microplate BCA method
Purity:	> 80% as determined by SDS-PAGE and Coomassie blue staining
Buffer:	50 mM Tris-HCl, pH 8.0, 8 M urea
Note:	For testing in cell culture applications, please filter before use. Note that you may experience some loss of protein during the filtration process.
Storage:	Store at -80°C.
Stability:	Stable for 12 months from the date of receipt of the product under proper storage and handling conditions. Avoid repeated freeze-thaw cycles.
RefSeq:	NP_000056
Locus ID:	729
UniProt ID:	P13671
RefSeq Size:	3722
Cytogenetics:	5p13.1
RefSeq ORF:	2802



[View online »](#)

Summary:

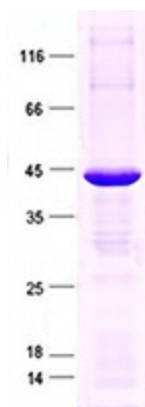
This gene encodes a component of the complement cascade. The encoded protein is part of the membrane attack complex that can be incorporated into the cell membrane and cause cell lysis. Mutations in this gene are associated with complement component-6 deficiency. Transcript variants encoding the same protein have been described.[provided by RefSeq, Nov 2012]

Protein Families:

Druggable Genome, Secreted Protein

Protein Pathways:

Complement and coagulation cascades, Prion diseases, Systemic lupus erythematosus

Product images:

Purified recombinant protein C6 was analyzed by SDS-PAGE gel and Coomassie Blue Staining.