

Product datasheet for **TP762159**

MMP15 (NM_002428) Human Recombinant Protein

Product data:

Product Type:	Recombinant Proteins
Description:	Purified recombinant protein of Human matrix metalloproteinase 15 (membrane-inserted) (MMP15), Gly304-Val614, with N-terminal His tag, expressed in E.coli, 50ug
Species:	Human
Expression Host:	E. coli
Expression cDNA Clone or AA Sequence:	A DNA sequence encoding the region(Gly304-Val614) of MMP15
Tag:	N-His
Predicted MW:	35.3 kDa
Concentration:	>0.05 µg/µL as determined by microplate BCA method
Purity:	> 80% as determined by SDS-PAGE and Coomassie blue staining
Buffer:	50 mM Tris-HCl, pH 8.0, 8 M urea
Note:	For testing in cell culture applications, please filter before use. Note that you may experience some loss of protein during the filtration process.
Storage:	Store at -80°C.
Stability:	Stable for 12 months from the date of receipt of the product under proper storage and handling conditions. Avoid repeated freeze-thaw cycles.
RefSeq:	NP_002419
Locus ID:	4324
UniProt ID:	P51511 , A0A024R6U8
RefSeq Size:	4456
Cytogenetics:	16q21
RefSeq ORF:	2007
Synonyms:	MMP-15; MT2-MMP; MT2MMP; MTMMP2; SMCP-2



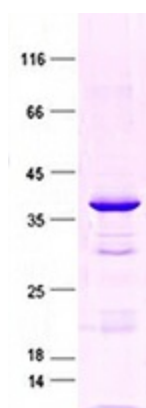
[View online »](#)

Summary:

This gene encodes a member of the peptidase M10 family and membrane-type subfamily of matrix metalloproteinases (MMPs). Proteins in this family are involved in the breakdown of extracellular matrix in normal physiological processes, such as embryonic development, reproduction, and tissue remodeling, as well as in disease processes, such as arthritis and metastasis. Members of this subfamily contain a transmembrane domain suggesting that these proteins are expressed at the cell surface rather than secreted. The encoded preproprotein is proteolytically processed to generate the mature protease. This protein may play a role in cancer progression. [provided by RefSeq, Jan 2016]

Protein Families:

Druggable Genome, Protease, Transmembrane

Product images:

Purified recombinant protein MMP15 was analyzed by SDS-PAGE gel and Coomassie Blue Staining.