

## Product datasheet for **TP750226**

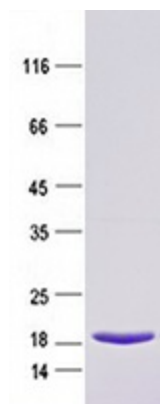
### Betv1 Betula pendula Recombinant Protein

#### Product data:

<b>Product Type:</b>	Recombinant Proteins
<b>Description:</b>	Purified recombinant protein of Major pollen allergen Bet v 1-A (Betv1), full length , with N-terminal His tag, expressed in E.coli, 50ug
<b>Species:</b>	Betula pendula
<b>Expression Host:</b>	E. coli
<b>Expression cDNA Clone or AA Sequence:</b>	1 MHHHHHHENL YFQGAIAMGV FNYETETTSV IPAARLFKAF ILDGDNLFPK VAPQAISVVE 61 NIEGNGGPGT IKKISFPEGF PFKYVKDRVD EVDHTNFKYN YSVIEGGPIG DTLEKISNEI 121 KIVATPDGGS ILKISNKYHT KGDHEVKAEQ VKASKEMGET LLRAVESYLL AHSDAYN
<b>Tag:</b>	N-His
<b>Predicted MW:</b>	19.6 kDa
<b>Concentration:</b>	>0.05 µg/µL as determined by microplate BCA method
<b>Purity:</b>	> 90% as determined by SDS-PAGE and Coomassie blue staining
<b>Buffer:</b>	50 mM Tris-HCl, pH 8.0, 500 mM NaCl, 10% glycerol
<b>Note:</b>	For testing in cell culture applications, please filter before use. Note that you may experience some loss of protein during the filtration process.
<b>Storage:</b>	Store at -80°C after receiving vials.
<b>Stability:</b>	Stable for 12 months from the date of receipt of the product under proper storage and handling conditions. Avoid repeated freeze-thaw cycles.



[View online »](#)

**Product images:**

Purified recombinant protein Betv1 was analyzed by SDS-PAGE gel and Coomassie Blue Staining.