

## Product datasheet for **TP750223**

### IL15 (NM\_000585) Human Recombinant Protein

#### Product data:

Product Type:	Recombinant Proteins
Description:	Purified recombinant protein of Human interleukin 15 (IL15), transcript variant 3, 49Asn-End, 100ug
Species:	Human
Expression Host:	E. coli
Expression cDNA Clone or AA Sequence:	1 MNWVNVISDL KKIEDLIQSM HIDATLYTES DVHPSCKVTA MKCFLELQV ISLESGDASI 61 HDTVENLIL ANNSLSSNGN VTESGCKECE ELEEKNIKEF LQSFVHIVQM FINTSLEHHH 121 HHH
Tag:	C-HIS
Predicted MW:	14.0kDa
Concentration:	>0.05 µg/µL as determined by microplate BCA method
Purity:	> 95% as determined by SDS-PAGE and Coomassie blue staining
Buffer:	Lyophilized from a sterile solution containing PBS pH7.4 8% trehalose
Storage:	Store at -20°C after receiving vials.
Stability:	Stable for at least 1 year from receipt of products under proper storage and handling conditions. Avoid repeated freeze-thaw cycles.
RefSeq:	<a href="#">NP_000576</a>
Locus ID:	3600
UniProt ID:	<a href="#">P40933</a>
RefSeq Size:	2012
Cytogenetics:	4q31.21
RefSeq ORF:	486
Synonyms:	IL-15



[View online »](#)

**Summary:**

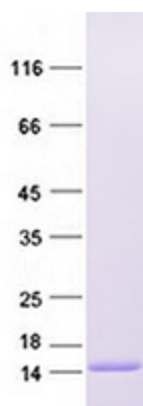
The protein encoded by this gene is a cytokine that regulates T and natural killer cell activation and proliferation. This cytokine and interleukine 2 share many biological activities. They are found to bind common hematopoietin receptor subunits, and may compete for the same receptor, and thus negatively regulate each other's activity. The number of CD8+ memory cells is shown to be controlled by a balance between this cytokine and IL2. This cytokine induces the activation of JAK kinases, as well as the phosphorylation and activation of transcription activators STAT3, STAT5, and STAT6. Studies of the mouse counterpart suggested that this cytokine may increase the expression of apoptosis inhibitor BCL2L1/BCL-x(L), possibly through the transcription activation activity of STAT6, and thus prevent apoptosis. Alternatively spliced transcript variants of this gene have been reported. [provided by RefSeq, Feb 2011]

**Protein Families:**

Druggable Genome, Secreted Protein

**Protein Pathways:**

Cytokine-cytokine receptor interaction, Jak-STAT signaling pathway

**Product images:**

Coomassie blue staining of purified IL15 protein (Cat #TP750223). The protein was produced from E.coli.