

## Product datasheet for **TP750222**

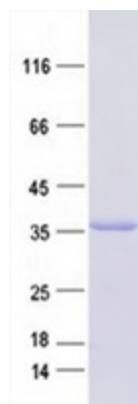
### PP2A (PPP2CA) (NM\_001101686) Rabbit Recombinant Protein

#### Product data:

<b>Product Type:</b>	Recombinant Proteins
<b>Description:</b>	Purified recombinant protein of Serine/threonine-protein phosphatase 2A catalytic subunit alpha isoform , full length(266Ser, 269Ser), with N-terminal His tag, expressed in E.coli, 50ug
<b>Species:</b>	Rabbit
<b>Expression Host:</b>	E. coli
<b>Expression cDNA Clone or AA Sequence:</b>	<pre> 1   MHHHHHHMDE KVFTKELDQW IEQLNECKQL SESQVKS LCE KAKEILTKES NVQEVRCPV 61  VCGDVHGQFH DLMELFRIGG KSPDTNYLFM GDYVDRGYYS VETVLLVAL KVR YRERIT 121 LRGNHESRQI TQVYGFYDEC LRKYGNANVW KYFTDLFDYL PLTALVDGQI FCLHGGLSPS 181 IDTLDHIRAL DRLQVEPHEG PMCDLLWSDP DDRGGWGISP RGAGYTFGQD ISETFNHANG 241 LTLVSRHQQL VMEGYNWCHD RNWVTIFSAP NYSYRSGNQA AIMELDDTLK YSFLQFDPAP 301 RRGEPHVTRR TPDYFL </pre>
<b>Tag:</b>	N-His
<b>Predicted MW:</b>	36.5 kDa
<b>Concentration:</b>	>0.05 µg/µL as determined by microplate BCA method
<b>Purity:</b>	> 80% as determined by SDS-PAGE and Coomassie blue staining
<b>Buffer:</b>	50 mM Tris-HCl, pH 8.0, 500 mM NaCl, 1% sarkosyl, 10% glycerol
<b>Note:</b>	For testing in cell culture applications, please filter before use. Note that you may experience some loss of protein during the filtration process.
<b>Storage:</b>	Store at -80°C after receiving vials.
<b>Stability:</b>	Stable for 12 months from the date of receipt of the product under proper storage and handling conditions. Avoid repeated freeze-thaw cycles.
<b>RefSeq:</b>	<a href="#">NP_001095156</a>
<b>Locus ID:</b>	100009252
<b>Summary:</b>	protein phosphatase 2, catalytic subunit, alpha isozyme



[View online »](#)

**Product images:**

Purified recombinant protein PP2A was analyzed by SDS-PAGE gel and Coomassie Blue Staining.