

## Product datasheet for **TP750217**

### Apolipoprotein E (APOE) (NM\_000041) Human Recombinant Protein

#### Product data:

<b>Product Type:</b>	Recombinant Proteins
<b>Description:</b>	Purified recombinant protein of Human Apolipoprotein E isoform 1, 19Lys-End(79Ala), tag free, expressed in E.coli, 50ug
<b>Species:</b>	Human
<b>Expression Host:</b>	E. coli
<b>Expression cDNA Clone or AA Sequence:</b>	1 KVEQAVETEP EPELRQQTEW QSGQRWELAL GRFWDYLRWV QTLSEQVQEE LLSSQVTQEL 61 AALMDETMKE LKAYKSELEE QLTPVAEETR ARLSKELQAA QARLGADMED VCGRLVQYRG 121 EVQAMLGQST EELRVRLASH LRKLRKLLR DADDLQKRLA VYQAGAREGA ERGLSAIRER 181 LGPLVEQGRV RAATVGS LAG QPLQERAQAW GERLRARMEE MGSRTRDRLD EVKEQVAEVR 241 AKLEEQAQOI RLQAEAFQAR LKSWFEPLVE DMQRQWAGLV EKVQAAVGTS AAPVPSDNH
<b>Tag:</b>	Tag Free
<b>Predicted MW:</b>	34.2 kDa
<b>Concentration:</b>	>0.05 µg/µL as determined by Bradford protein Assay method
<b>Purity:</b>	> 80% as determined by SDS-PAGE and Coomassie blue staining
<b>Buffer:</b>	50 mM Tris-HCl, pH 8.0, 500 mM NaCl, 10% glycerol
<b>Note:</b>	For testing in cell culture applications, please filter before use. Note that you may experience some loss of protein during the filtration process.
<b>Storage:</b>	Store at -80°C after receiving vials.
<b>Stability:</b>	Stable for 12 months from the date of receipt of the product under proper storage and handling conditions. Avoid repeated freeze-thaw cycles.
<b>RefSeq:</b>	<a href="#">NP_000032</a>
<b>Locus ID:</b>	348
<b>UniProt ID:</b>	<a href="#">P02649</a> , <a href="#">A0A0S2Z3D5</a>
<b>Cytogenetics:</b>	19q13.32
<b>Synonyms:</b>	AD2; APO-E; ApoE4; LDLQC5; LPG



[View online »](#)

**Summary:**

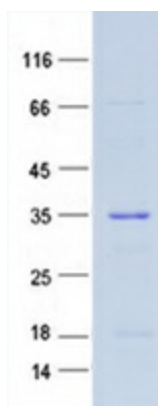
The protein encoded by this gene is a major apoprotein of the chylomicron. It binds to a specific liver and peripheral cell receptor, and is essential for the normal catabolism of triglyceride-rich lipoprotein constituents. This gene maps to chromosome 19 in a cluster with the related apolipoprotein C1 and C2 genes. Mutations in this gene result in familial dysbetalipoproteinemia, or type III hyperlipoproteinemia (HLP III), in which increased plasma cholesterol and triglycerides are the consequence of impaired clearance of chylomicron and VLDL remnants. [provided by RefSeq, Jun 2016]

**Protein Families:**

Adult stem cells, Druggable Genome, Secreted Protein, Stem cell - Pluripotency

**Protein Pathways:**

Alzheimer's disease

**Product images:**

Purified recombinant protein APOE was analyzed by SDS-PAGE gel and Coomossie Blue Staining.