

## Product datasheet for **TP750209**

### beta 2 Microglobulin (B2M) (NM\_004048) Human Recombinant Protein

#### Product data:

Product Type:	Recombinant Proteins
Description:	Purified recombinant protein of human beta-2-microglobulin(B2M), Ile21-Met119, with N-terminal His tag, expressed in E.coli, 50ug
Species:	Human
Expression Host:	E. coli
Expression cDNA Clone or AA Sequence:	MHHHHHHIQR TPKIQVYSRH PAENGKSNFL NCYVSGFHPS DIEVDLLKNG ERIEKVEHSD LFSKDWFSY LLYYTEFTPT EKDEYACRVN HVTLSPKIV KWDRDM
Tag:	N-His
Predicted MW:	12.7 kDa
Concentration:	>0.05 µg/µL as determined by microplate BCA method
Purity:	> 95% as determined by SDS-PAGE and Coomassie blue staining
Buffer:	25 mM Tris-HCl, pH 8.0, 150 mM NaCl
Note:	For testing in cell culture applications, please filter before use. Note that you may experience some loss of protein during the filtration process.
Storage:	Store at -80°C after receiving vials.
Stability:	Stable for 12 months from the date of receipt of the product under proper storage and handling conditions. Avoid repeated freeze-thaw cycles.
RefSeq:	<a href="#">NP_004039</a>
Locus ID:	567
UniProt ID:	<a href="#">P61769</a>
Cytogenetics:	15q21.1
Synonyms:	IMD43
Summary:	This gene encodes a serum protein found in association with the major histocompatibility complex (MHC) class I heavy chain on the surface of nearly all nucleated cells. The protein has a predominantly beta-pleated sheet structure that can form amyloid fibrils in some pathological conditions. The encoded antimicrobial protein displays antibacterial activity in amniotic fluid. A mutation in this gene has been shown to result in hypercatabolic hypoproteinemia.[provided by RefSeq, Aug 2014]

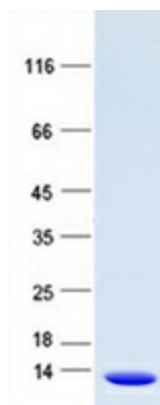


[View online »](#)

Protein Families: Druggable Genome, Secreted Protein

Protein Pathways: Antigen processing and presentation

### Product images:



Purified recombinant protein B2M was analyzed by SDS-PAGE gel and Coomassie Blue Staining.