

Product datasheet for **TP750202**

CYP1A1 (NM_000499) Human Recombinant Protein

Product data:

Product Type:	Recombinant Proteins
Description:	Purified recombinant protein of Human cytochrome P450, family 1, subfamily A, polypeptide 1 (CYP1A1), full-length, with N-terminal Myc-ddk tag, expressed in E.coli, 50ug
Species:	Human
Expression Host:	E. coli
Expression cDNA Clone or AA Sequence:	A DNA sequence encoding full-length of CYP1A1
Tag:	Myc-DDK
Predicted MW:	60.9kDa
Concentration:	>0.05 µg/µL as determined by microplate BCA method
Purity:	> 85% as determined by SDS-PAGE and Coomassie blue staining
Buffer:	50 mM Tris-HCl, pH 8.0, 500 mM NaCl, 10% glycerol
Note:	For testing in cell culture applications, please filter before use. Note that you may experience some loss of protein during the filtration process.
Storage:	Store at -80°C after receiving vials.
Stability:	Stable for 12 months from the date of receipt of the product under proper storage and handling conditions. Avoid repeated freeze-thaw cycles.
RefSeq:	NP_000490
Locus ID:	1543
UniProt ID:	P04798 , A0N0X8
RefSeq Size:	2608
Cytogenetics:	15q24.1
RefSeq ORF:	1536
Synonyms:	AHH; AHRR; CP11; CYP1; CYP1A1; P1-450; P450-C; P450DX



[View online »](#)

Summary:

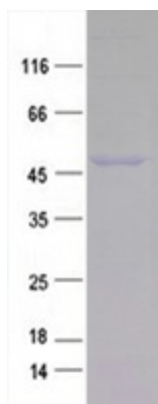
This gene, CYP1A1, encodes a member of the cytochrome P450 superfamily of enzymes. The cytochrome P450 proteins are monooxygenases which catalyze many reactions involved in drug metabolism and synthesis of cholesterol, steroids and other lipids. This protein localizes to the endoplasmic reticulum and its expression is induced by some polycyclic aromatic hydrocarbons (PAHs), some of which are found in cigarette smoke. The enzyme's endogenous substrate is unknown; however, it is able to metabolize some PAHs to carcinogenic intermediates. The gene has been associated with lung cancer risk. A related family member, CYP1A2, is located approximately 25 kb away from CYP1A1 on chromosome 15. Alternative splicing results in multiple transcript variants encoding distinct isoforms. [provided by RefSeq, Jan 2016]

Protein Families:

Druggable Genome, P450, Transmembrane

Protein Pathways:

Metabolism of xenobiotics by cytochrome P450, Retinol metabolism, Tryptophan metabolism

Product images:

Purified recombinant protein CYP1A1 was analyzed by SDS-PAGE gel and Coomassie Blue Staining.