

## Product datasheet for **TP750186**

### **BMP4 (NM\_001202) Human Recombinant Protein**

#### **Product data:**

<b>Product Type:</b>	Recombinant Proteins
<b>Description:</b>	Purified recombinant protein of Human bone morphogenetic protein 4 (BMP4), transcript variant 1, Ser293-End, with N-terminal T7 tag, expressed in E.coli, 50ug
<b>Species:</b>	Human
<b>Expression Host:</b>	E. coli
<b>Expression cDNA Clone or AA Sequence:</b>	A DNA sequence encoding the region(Ser293-End) of BMP4
<b>Tag:</b>	N-T7
<b>Predicted MW:</b>	13.2 kDa
<b>Concentration:</b>	>0.05 µg/µL as determined by microplate BCA method
<b>Purity:</b>	> 85% as determined by SDS-PAGE and Coomassie blue staining
<b>Buffer:</b>	10 mM sodium citrate, pH 3.5, 10% glycerol
<b>Endotoxin:</b>	< 1.0 EU per 1 µg of protein (determined by LAL method)
<b>Note:</b>	For testing in cell culture applications, please filter before use. Note that you may experience some loss of protein during the filtration process.
<b>Storage:</b>	Store at -80°C.
<b>Stability:</b>	Stable for 12 months from the date of receipt of the product under proper storage and handling conditions. Avoid repeated freeze-thaw cycles.
<b>RefSeq:</b>	<a href="#">NP_001193</a>
<b>Locus ID:</b>	652
<b>UniProt ID:</b>	<a href="#">P12644</a> , <a href="#">Q53XC5</a>
<b>RefSeq Size:</b>	1957
<b>Cytogenetics:</b>	14q22.2
<b>RefSeq ORF:</b>	1224
<b>Synonyms:</b>	BMP2B; BMP2B1; MCOPS6; OFC11; ZYME



[View online »](#)

**Summary:**

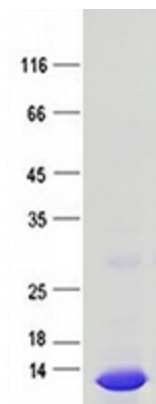
This gene encodes a secreted ligand of the TGF-beta (transforming growth factor-beta) superfamily of proteins. Ligands of this family bind various TGF-beta receptors leading to recruitment and activation of SMAD family transcription factors that regulate gene expression. The encoded preproprotein is proteolytically processed to generate each subunit of the disulfide-linked homodimer. This protein regulates heart development and adipogenesis. Mutations in this gene are associated with orofacial cleft and microphthalmia in human patients. The encoded protein may also be involved in the pathology of multiple cardiovascular diseases and human cancers. [provided by RefSeq, Jul 2016]

**Protein Families:**

Adult stem cells, Cancer stem cells, Druggable Genome, Embryonic stem cells, Induced pluripotent stem cells, Secreted Protein, Stem cell relevant signaling - TGFb/BMP signaling pathway

**Protein Pathways:**

Basal cell carcinoma, Hedgehog signaling pathway, Pathways in cancer, TGF-beta signaling pathway

**Product images:**

Purified recombinant protein BMP4 was analyzed by SDS-PAGE gel and Coomassie Blue Staining.