

Product datasheet for TP750178

NOTCH1 (NM_017617) Human Recombinant Protein

Product data:

Product Type:	Recombinant Proteins
Description:	Purified recombinant protein of Human notch 1 (NOTCH1), Glu1448-Gln1734, tag free, expressed in E.Coli, 50 ug
Species:	Human
Expression Host:	E. coli
Tag:	tag free
Predicted MW:	31.7KDa
Concentration:	>50 ug/mL as determined by microplate BCA method
Purity:	> 90% as determined by SDS-PAGE and Coomassie blue staining
Buffer:	25 mM Tris, pH8.0, 150 mM NaCl, 10% glycerol.
Storage:	Store at +4°C.
Stability:	Stable for 12 months from the date of receipt of the product under proper storage and handling conditions. Avoid repeated freeze-thaw cycles.
RefSeq:	NP_060087
Locus ID:	4851
UniProt ID:	P46531
RefSeq Size:	9312
Cytogenetics:	9q34.3
RefSeq ORF:	7668
Synonyms:	AOS5; AOVD1; hN1; TAN1



[View online »](#)

Summary:

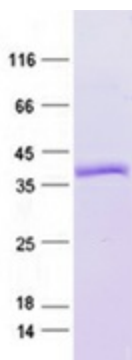
This gene encodes a member of the NOTCH family of proteins. Members of this Type I transmembrane protein family share structural characteristics including an extracellular domain consisting of multiple epidermal growth factor-like (EGF) repeats, and an intracellular domain consisting of multiple different domain types. Notch signaling is an evolutionarily conserved intercellular signaling pathway that regulates interactions between physically adjacent cells through binding of Notch family receptors to their cognate ligands. The encoded preproprotein is proteolytically processed in the trans-Golgi network to generate two polypeptide chains that heterodimerize to form the mature cell-surface receptor. This receptor plays a role in the development of numerous cell and tissue types. Mutations in this gene are associated with aortic valve disease, Adams-Oliver syndrome, T-cell acute lymphoblastic leukemia, chronic lymphocytic leukemia, and head and neck squamous cell carcinoma. [provided by RefSeq, Jan 2016]

Protein Families:

Adult stem cells, Cancer stem cells, Druggable Genome, ES Cell Differentiation/IPS, Stem cell relevant signaling - DSL/Notch pathway

Protein Pathways:

Dorso-ventral axis formation, Notch signaling pathway, Prion diseases

Product images:

Purified recombinant protein NOTCH1 was analyzed by SDS-PAGE gel and Coomassie Blue Staining.