

## Product datasheet for **TP750145**

### Creatine kinase M type (CKM) (NM\_001824) Human Recombinant Protein

#### Product data:

Product Type:	Recombinant Proteins
Description:	Purified recombinant heterodimer protein of Human CKMB(full length creatine kinase, muscle (CKM) with N-terminal GST tag, and full length creatine kinase, brain (CKB), with N-terminal His(CKB) tag), expressed in E.coli, 100ug
Species:	Human
Expression Host:	E. coli
Expression cDNA Clone or AA Sequence:	A DNA sequence encoding the full length of CKM/CKB
Tag:	N-GST(CKM) and N-His(CKB)
Predicted MW:	69.1 kDa/42.6 kDa
Concentration:	>0.05 µg/µL as determined by microplate BCA method
Purity:	> 90% as determined by SDS-PAGE and Coomassie blue staining
Buffer:	10 mM Tris-HCl, pH 7.2, 5 mM mercaptoethanol, 50% glycerol
Note:	For testing in cell culture applications, please filter before use. Note that you may experience some loss of protein during the filtration process.
Storage:	Store at -80°C.
Stability:	Stable for 12 months from the date of receipt of the product under proper storage and handling conditions. Avoid repeated freeze-thaw cycles.
Locus ID:	1158
UniProt ID:	<a href="#">P06732</a> , <a href="#">B2R892</a>
RefSeq Size:	1666
Cytogenetics:	19q13.32
RefSeq ORF:	1143
Synonyms:	CKMM; CPK-M; M-CK



[View online »](#)

**Summary:**

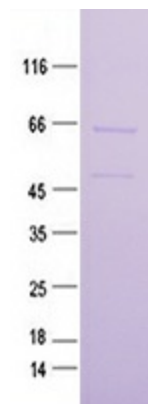
The protein encoded by this gene is a cytoplasmic enzyme involved in energy homeostasis and is an important serum marker for myocardial infarction. The encoded protein reversibly catalyzes the transfer of phosphate between ATP and various phosphogens such as creatine phosphate. It acts as a homodimer in striated muscle as well as in other tissues, and as a heterodimer with a similar brain isozyme in heart. The encoded protein is a member of the ATP:guanido phosphotransferase protein family. [provided by RefSeq, Jul 2008]

**Protein Families:**

Druggable Genome

**Protein Pathways:**

Arginine and proline metabolism, Metabolic pathways

**Product images:**

Purified recombinant protein CKM/CKB was analyzed by SDS-PAGE gel and Coomassie Blue Staining.