

## Product datasheet for **TP728366L**

### Recombinant M-CSF (Macrophage colony-stimulating factor), Mouse

#### Product data:

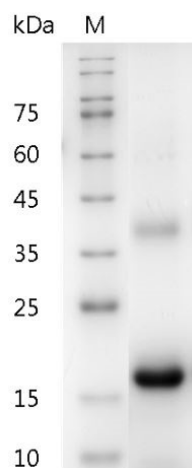
|  |   |
|--|---|
| <b>Product Type:</b>                         | Recombinant Proteins  |
| <b>Description:</b>                          | Recombinant M-CSF (Macrophage colony-stimulating factor), Mouse   |
| <b>Species:</b>                              | Mouse   |
| <b>Expression Host:</b>                      | E. coli   |
| <b>Expression cDNA Clone or AA Sequence:</b> | MKEVSEHC SHMIGNHGLKVLQQLIDSQMETSCQIAFEFVDQEQLLDDPVCYLKKAFFLVQDIIDETMRFKD NTPNANATERLQELSNNLNSCFTKDYEEQNKACVTRTFHETPLQLLEKIKNFFNETKNLLEKDNIFTKNC NNSFAKCSSRDVWTKP with polyhistidine tag at the C-terminus   |
| <b>Tag:</b>                                  | His Tag (C-term)  |
| <b>Predicted MW:</b>                         | The protein has a calculated MW of 19.02 kDa. The protein migrates as 17-25 kDa under reducing condition (SDS-PAGE analysis).   |
| <b>Purity:</b>                               | >98% as determined by SDS-PAGE.   |
| <b>Buffer:</b>                               | The protein was lyophilized from a 0.2 µm filtered solution containing 1X PBS, pH 8.0.  |
| <b>Bioactivity:</b>                          | Measure by its ability to induce proliferation in NFS-60 cells. The ED <sub>50</sub> for this effect is <2 ng/mL. The specific activity of recombinant mouse M-CSF is approximately >5 x 10 <sup>5</sup> IU/mg.   |
| <b>Endotoxin:</b>                            | <0.1 EU per 1 µg of the protein by the LAL method.  |
| <b>Reconstitution Method:</b>                | Centrifuge at 3000 rpm for 5 mins before opening. It is recommended to reconstitute the lyophilized protein in sterile H <sub>2</sub> O to a concentration not less than 100 µg/mL and incubate the stock solution at room temperature for at least 20 mins to ensure sufficient re-dissolved. Do Not Vortex! Vigorous shaking may impair the biological activity of the protein. |
| <b>Applications:</b>                         | Cell culture  |
| <b>Storage:</b>                              | Lyophilized protein should be stored at -20°C for 1 year. Upon reconstitution, store at 2°C to 8°C for up to 1 week. Further dilute in a buffer containing a carrier protein or stabilizer (e.g. 0.1% BSA, 10%FBS, 5%HSA or 5% trehalose solution), protein aliquots should be stored at -20°C or -80°C for 3-6 months. Avoid repeated freeze/thaw cycles.                        |
| <b>UniProt ID:</b>                           | <a href="#">P07141</a>  |
| <b>Synonyms:</b>                             | CSF-1, MGI-IM   |



[View online »](#)

**Summary:**

Macrophage Colony-Stimulating Factor (M-CSF) is a 19.02 kDa hematopoietic Growth Factors with 162 amino acid residues. The active form of the protein is homodimer, and secreted by osteoblasts. M-CSF controls the production, differentiation, and function of monocytes, macrophages, and bone marrow progenitor cells. M-CSF is able to activate CSF-1 signaling pathway via binding its receptor CSF-1R.

**Product images:**

SDS- PAGE analysis of recombinant mouse M-CSF