

## Product datasheet for **TP728357S**

### Recombinant IL-36 gamma (Interleukin-36 gamma), Mouse

#### Product data:

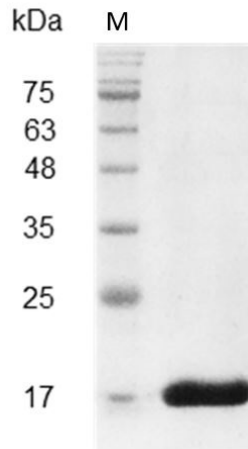
Product Type:	Recombinant Proteins
Description:	Recombinant IL-36 gamma (Interleukin-36 gamma), Mouse
Species:	Mouse
Expression Host:	E. coli
Expression cDNA Clone or AA Sequence:	MGRETPDFGEVFDLDQQVWIFRNQALVTVPRSHRVTPVSVTILPCKYPESLEQDKGIAIYLGIQNPDKCLFC KEVNGHPTLLLKEEKILDLYHHPEPMKPFIFYHTRTGGTSTFESVAFPGHYIASSKTGNPIFLTSKKGEYYNI NFNLDIKS with polyhistidine tag at the C-terminus.
Tag:	His Tag (C-term)
Predicted MW:	The protein has a calculated MW of 18.27 kDa. The protein migrates about 17 kDa under reducing condition (SDS-PAGE analysis).
Purity:	>98% as determined by SDS-PAGE.
Buffer:	The protein was lyophilized from a 0.2 µm filtered solution containing 1X PBS, pH 7.4.
Bioactivity:	Measure by its ability to induce IL-6 secretion in 3T3 cells. The ED <sub>50</sub> for this effect is <15 ng/mL. The specific activity of recombinant mouse IL-36 gamma is > 6 x 10 <sup>4</sup> IU/mg.
Endotoxin:	<0.1 EU per 1 µg of the protein by the LAL method.
Reconstitution Method:	Centrifuge at 3000 rpm for 5 mins before opening. It is recommended to reconstitute the lyophilized protein in sterile H <sub>2</sub> O to a concentration not less than 100 µg/mL and incubate the stock solution at room temperature for at least 20 mins to ensure sufficient re-dissolved. Do Not Vortex! Vigorous shaking may impair the biological activity of the protein.
Applications:	Cell culture
Storage:	Lyophilized protein should be stored at -20°C for 1 year. Upon reconstitution, store at 2°C to 8°C for up to 1 week. Further dilute in a buffer containing a carrier protein or stabilizer (e.g. 0.1% BSA, 10%FBS, 5%HSA or 5% trehalose solution), protein aliquots should be stored at -20°C or -80°C for 3-6 months. Avoid repeated freeze/thaw cycles.
UniProt ID:	<a href="#">Q8R460</a>
Synonyms:	interleukin 1 family, member 9, IL-1F9,IL36g



[View online »](#)

**Summary:**

Interleukin 36 gamma (IL-36 gamma) is a 17.65 kDa cytokine with 159 amino acid residues. IL-36 gamma is a member of the IL-1 family and is mainly expressed in keratinocytes, bronchial epithelial cells, macrophages, and monocyte. This cytokine responds to multiple pathogen-associated molecular patterns (PAMPs) and participates in the inflammatory response. In addition, it also induces the production of pro-inflammatory cytokines like IL-12, IL-1 $\beta$ , IL-6, TNF- $\alpha$ , and IL-23.

**Product images:**

SDS- PAGE analysis of recombinant mouse IL-36 gamma