

## Product datasheet for **TP728357M**

### Recombinant IL-36 gamma (Interleukin-36 gamma), Mouse

#### Product data:

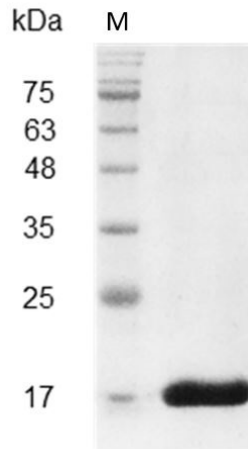
<b>Product Type:</b>	Recombinant Proteins
<b>Description:</b>	Recombinant IL-36 gamma (Interleukin-36 gamma), Mouse
<b>Species:</b>	Mouse
<b>Expression Host:</b>	E. coli
<b>Expression cDNA Clone or AA Sequence:</b>	MGRETPDFGEVFDLDQQVWIFRNQALVTVPRSHRVTPVSVTILPCKYPESLEQDKGIAIYLGIQNPDKCLFC KEVNGHPTLLLKEEKILDLYHHPEPMKPFLFYHTRTGGTSTFESVAFPGHYIASSKTGNPIFLTSSKKGEYYNI NFNLDIKS with polyhistidine tag at the C-terminus.
<b>Tag:</b>	His Tag (C-term)
<b>Predicted MW:</b>	The protein has a calculated MW of 18.27 kDa. The protein migrates about 17 kDa under reducing condition (SDS-PAGE analysis).
<b>Purity:</b>	>98% as determined by SDS-PAGE.
<b>Buffer:</b>	The protein was lyophilized from a 0.2 µm filtered solution containing 1X PBS, pH 7.4.
<b>Bioactivity:</b>	Measure by its ability to induce IL-6 secretion in 3T3 cells. The ED <sub>50</sub> for this effect is <15 ng/mL. The specific activity of recombinant mouse IL-36 gamma is > 6 x 10 <sup>4</sup> IU/mg.
<b>Endotoxin:</b>	<0.1 EU per 1 µg of the protein by the LAL method.
<b>Reconstitution Method:</b>	Centrifuge at 3000 rpm for 5 mins before opening. It is recommended to reconstitute the lyophilized protein in sterile H <sub>2</sub> O to a concentration not less than 100 µg/mL and incubate the stock solution at room temperature for at least 20 mins to ensure sufficient re-dissolved. Do Not Vortex! Vigorous shaking may impair the biological activity of the protein.
<b>Applications:</b>	Cell culture
<b>Storage:</b>	Lyophilized protein should be stored at -20°C for 1 year. Upon reconstitution, store at 2°C to 8°C for up to 1 week. Further dilute in a buffer containing a carrier protein or stabilizer (e.g. 0.1% BSA, 10%FBS, 5%HSA or 5% trehalose solution), protein aliquots should be stored at -20°C or -80°C for 3-6 months. Avoid repeated freeze/thaw cycles.
<b>UniProt ID:</b>	<a href="#">Q8R460</a>
<b>Synonyms:</b>	interleukin 1 family, member 9, IL-1F9,IL36g



[View online »](#)

**Summary:**

Interleukin 36 gamma (IL-36 gamma) is a 17.65 kDa cytokine with 159 amino acid residues. IL-36 gamma is a member of the IL-1 family and is mainly expressed in keratinocytes, bronchial epithelial cells, macrophages, and monocyte. This cytokine responds to multiple pathogen-associated molecular patterns (PAMPs) and participates in the inflammatory response. In addition, it also induces the production of pro-inflammatory cytokines like IL-12, IL-1 $\beta$ , IL-6, TNF- $\alpha$ , and IL-23.

**Product images:**

SDS- PAGE analysis of recombinant mouse IL-36 gamma