

## Product datasheet for **TP728356M**

### Recombinant IL-36 alpha (Interleukin-36 alpha), Mouse

#### Product data:

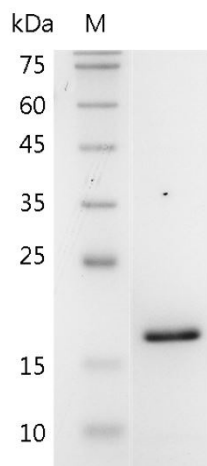
<b>Product Type:</b>	Recombinant Proteins
<b>Description:</b>	Recombinant IL-36 alpha (Interleukin-36 alpha), Mouse
<b>Species:</b>	Mouse
<b>Expression Host:</b>	E. coli
<b>Expression cDNA Clone or AA Sequence:</b>	MNKEKELRAASPSLRHVQDLSSRVWILQNNILTAVPRKEQTVPVTTILLPCQYLDLTLETNRGDPTYMGVQR PMSCLFCTKDGEQPVQLQEGGNIMEMYNKKEPVKASLFYHKKSGTTSTFESAAPGWFIAVCSKGCPLIL TQELGEIFITDFEMIVVH with polyhistidine tag at the C-terminus.
<b>Tag:</b>	His Tag (C-term)
<b>Predicted MW:</b>	The protein has a calculated MW of 18.82 kDa. The protein migrates as 17-25 kDa under reducing condition (SDS-PAGE analysis).
<b>Purity:</b>	>98% as determined by SDS-PAGE.
<b>Buffer:</b>	The protein was lyophilized from a 0.2 µm filtered solution containing 1X PBS, pH 7.4.
<b>Bioactivity:</b>	Measure by its ability to induce IL-6 secretion in 3T3 cells. The ED <sub>50</sub> for this effect is <15 ng/mL. The specific activity of recombinant mouse IL-36 alpha is > 1 x 10 <sup>5</sup> IU/mg.
<b>Endotoxin:</b>	<0.1 EU per 1 µg of the protein by the LAL method.
<b>Reconstitution Method:</b>	Centrifuge at 3000 rpm for 5 mins before opening. It is recommended to reconstitute the lyophilized protein in sterile H <sub>2</sub> O to a concentration not less than 100 µg/mL and incubate the stock solution at room temperature for at least 20 mins to ensure sufficient re-dissolved. Do Not Vortex! Vigorous shaking may impair the biological activity of the protein.
<b>Applications:</b>	Cell culture
<b>Storage:</b>	Lyophilized protein should be stored at -20°C for 1 year. Upon reconstitution, store at 2°C to 8°C for up to 1 week. Further dilute in a buffer containing a carrier protein or stabilizer (e.g. 0.1% BSA, 10%FBS, 5%HSA or 5% trehalose solution), protein aliquots should be stored at -20°C or -80°C for 3-6 months. Avoid repeated freeze/thaw cycles.
<b>UniProt ID:</b>	<a href="#">Q9JLA2</a>
<b>Synonyms:</b>	IL36A, Interleukin-1 family member 6 (IL-1F6), FIL1ε (FIL1E), Interleukin-1ε (IL1E), Fi, Fil, Fil1, IL-1, IL-1H1, IL1RP2



[View online »](#)

**Summary:**

Interleukin 36 alpha (IL-36 alpha) is a 17.76 kDa cytokine with 160 amino acid residues. IL-36 alpha is an IL-1 family member, which binds to the Interleukin-1 receptor and is expressed in the lung, stomach, and placenta. IL-36 alpha is critical in inflammatory responses and stimulates the production of proinflammatory cytokines, such as IL-12, IL-1 $\beta$ , IL-6, and TNF- $\alpha$ . It also induces the generation of IFN $\gamma$ , IL-4, and IL-17 in CD4+ T cells.

**Product images:**

SDS- PAGE analysis of recombinant mouse IL-36 alpha