

Product datasheet for **TP728336**

Recombinant IL-15 (Interleukin-15), Mouse

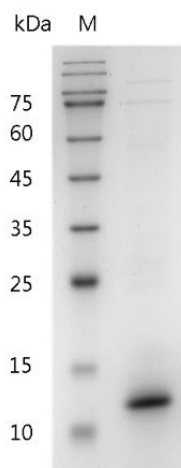
Product data:

Product Type:	Recombinant Proteins
Description:	Recombinant IL-15 (Interleukin-15), Mouse
Species:	Mouse
Expression Host:	E. coli
Expression cDNA Clone or AA Sequence:	NWIDVRYDLEKIESLIQSIHIDTTLYTDSDFHPSCKVTAMNCFLELQVILHEYSNMTLNETVRNVLYLANST LSSNKNVAESGCKECEELEEKTFTEFLQSFIRIVQMFINTS with polyhistidine tag at the N-terminus.
Tag:	His Tag (N-term)
Predicted MW:	The protein has a calculated MW of 14.2 kDa. The protein migrates as 11-14 kDa under reducing condition (SDS-PAGE analysis).
Purity:	>98% as determined by SDS-PAGE.
Buffer:	The protein was lyophilized from a 0.2 µm filtered solution of Proleukin buffer, pH 7.5, containing 1X PBS, pH 7.4.
Bioactivity:	Measure by its ability to induce CTLL-2 cells proliferation. The ED ₅₀ for this effect is <10 ng/mL. The specific activity of recombinant mouse IL-15 is approximately >1x 10 ⁵ IU/mg.
Endotoxin:	<0.1 EU per 1 µg of the protein by the LAL method.
Reconstitution Method:	Centrifuge at 3000 rpm for 5 mins before opening. It is recommended to reconstitute the lyophilized protein in sterile H ₂ O to a concentration not less than 100 µg/mL and incubate the stock solution at room temperature for at least 20 mins to ensure sufficient re-dissolved. Do Not Vortex! Vigorous shaking may impair the biological activity of the protein.
Applications:	Cell culture
Storage:	Lyophilized protein should be stored at -20°C for 1 year. Upon reconstitution, store at 2°C to 8°C for up to 1 week. Further dilute in a buffer containing a carrier protein or stabilizer (e.g. 0.1% BSA, 10%FBS, 5%HSA or 5% trehalose solution), protein aliquots should be stored at -20°C or -80°C for 3-6 months. Avoid repeated freeze/thaw cycles.
UniProt ID:	P48346
Synonyms:	IL-T


[View online »](#)

Summary:

Interleukin-15 (IL-15) is a 14-15 kDa glycoprotein with immune regulatory functions in many diverse cell types. IL-15 can be constitutively expressed in a variety of cell types stored as intracellular protein in the cytoplasm as well as transport to the cell surface, while only secreted from some cell types including monocytes, dendritic cells, epithelial cells, bone marrow stromal cells, and fibroblasts. As a pleiotropic cytokine, IL-15 mediates the crosstalk between innate immunity and adaptive immunity whose principal role is to kill virally infected cells. IL-15 plays a crucial role in the development, differentiation, and survival of NK cells. In monocytes, IL-15 induces the production of IL-8 and monocyte chemotactic protein 1 (MCP-1), which recruits neutrophils and monocytes to sites of infection. IL-15 can also act as a chemo-attractant in T lymphocytes and regulate the differentiation of T lymphocytes.

Product images:


SDS- PAGE analysis of recombinant mouse IL-15