

Product datasheet for **TP728334L**

Recombinant IL-12 p40 (Interleukin-12 p40), Mouse

Product data:

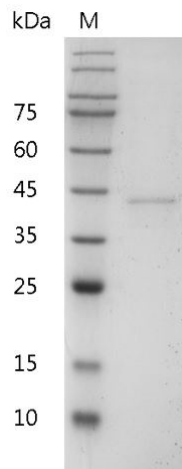
Product Type:	Recombinant Proteins
Description:	Recombinant IL-12 p40 (Interleukin-12 p40), Mouse
Species:	Mouse
Expression Host:	E. coli
Expression cDNA Clone or AA Sequence:	MWELEKDVYVEVDWTPDAPGETVNLTCDTPEEDDITWTSRQHGVIKSGKTLTITVKEFLDAGQYTCHK GGETLSHSHLLLHKKENGIWSTEILKNFKNKTKFLKCEAPNYSGRFTCSWLVRNMDLKFNIKSSSSSPDSR AVTCGMASLSAEKVTLDRDYEKYSVSCQEDVTCPTAEETLPIELALEARQQNKYENYSTSFFIRDIIKPDPP KNLQMKPLKNSQVEVSWEYPDSWSTPHSYFSLKFFVRIQRKKEKMKETEEGCNQGKGAFLVEKTSTEVQCK GGNVCVQAQDRYYNSSCSKWACVPCRVRVRS with polyhistidine tag at the C-terminus.
Tag:	His Tag (C-term)
Predicted MW:	The protein has a calculated MW of 36.60 kDa. The protein migrates as 35-48 kDa under reducing condition (SDS-PAGE analysis).
Purity:	>98% as determined by SDS-PAGE.
Buffer:	The protein was lyophilized from a 0.2 µm filtered solution containing 1X PBS, pH 7.4.
Bioactivity:	Measure by its ability to induce proliferation in T-cell enriched PBMC. The ED ₅₀ for this effect is <0.3 ng/mL.
Endotoxin:	<0.1 EU per 1 µg of the protein by the LAL method.
Reconstitution Method:	Centrifuge at 3000 rpm for 5 mins before opening. It is recommended to reconstitute the lyophilized protein in sterile H ₂ O to a concentration not less than 100 µg/mL and incubate the stock solution at room temperature for at least 20 mins to ensure sufficient re-dissolved. Do Not Vortex! Vigorous shaking may impair the biological activity of the protein.
Applications:	Cell culture
Storage:	Lyophilized protein should be stored at -20°C for 1 year. Upon reconstitution, store at 2°C to 8°C for up to 1 week. Further dilute in a buffer containing a carrier protein or stabilizer (e.g. 0.1% BSA, 10%FBS, 5%HSA or 5% trehalose solution), protein aliquots should be stored at -20°C or -80°C for 3-6 months. Avoid repeated freeze/thaw cycles.
UniProt ID:	P43432
Synonyms:	Interleukin-12 subunit beta, IL-12 subunit p40, IL-12B, Cytotoxic Lymphocyte Maturation Factor 40 kDa subunit (CLMF p40), NK cell Stimulating Factor Chain 2



[View online »](#)

Summary:

Interleukin 12 (IL-12) is a pro-inflammatory cytokine with a molecular weight of 70 kDa composed of two subunits, IL-12 p35 (35 kDa) and IL-12 p40 (40 kDa). IL-12 p40 is induced in excess over the other subunits of IL-12 and IL-23 and can exist in a monomeric or homodimeric form.

Product images:

SDS- PAGE analysis of recombinant mouse IL-12 p40