

## Product datasheet for **TP728328L**

### Recombinant IGF-II (Insulin-like growth factor-II), Mouse

#### Product data:

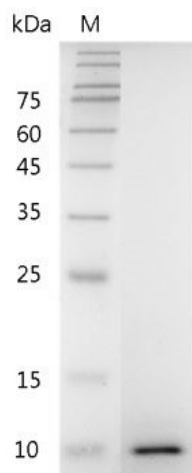
|  |   |
|--|---|
| <b>Product Type:</b>                         | Recombinant Proteins  |
| <b>Description:</b>                          | Recombinant IGF-II (Insulin-like growth factor-II), Mouse   |
| <b>Species:</b>                              | Mouse   |
| <b>Expression Host:</b>                      | E. coli   |
| <b>Expression cDNA Clone or AA Sequence:</b> | AYGPGETLCGGELVDTLQFVCSDRGFYFSRPSSRANRRSRGIVEECCFRSCDLALLETYCATPAKSE with polyhistidine tag at the N-terminus.   |
| <b>Tag:</b>                                  | His Tag (N-term)  |
| <b>Predicted MW:</b>                         | The protein has a calculated MW of 8.20 kDa. The protein migrates about 11 kDa under reducing condition (SDS-PAGE analysis).  |
| <b>Purity:</b>                               | >98% as determined by SDS-PAGE.   |
| <b>Buffer:</b>                               | The protein was lyophilized from a 0.2 µm filtered solution containing 1X PBS, pH 8.0.  |
| <b>Bioactivity:</b>                          | Measure by its ability to induce MCF-7 cells proliferation. The ED <sub>50</sub> for this effect is <6 ng/mL. The specific activity of recombinant mouse IGF-II is > 1.5 x 10 <sup>5</sup> IU/mg.   |
| <b>Endotoxin:</b>                            | <0.1 EU per 1 µg of the protein by the LAL method.  |
| <b>Reconstitution Method:</b>                | Centrifuge at 3000 rpm for 5 mins before opening. It is recommended to reconstitute the lyophilized protein in sterile H <sub>2</sub> O to a concentration not less than 100 µg/mL and incubate the stock solution at room temperature for at least 20 mins to ensure sufficient re-dissolved. Do Not Vortex! Vigorous shaking may impair the biological activity of the protein. |
| <b>Applications:</b>                         | Cell culture  |
| <b>Storage:</b>                              | Lyophilized protein should be stored at -20°C for 1 year. Upon reconstitution, store at 2°C to 8°C for up to 1 week. Further dilute in a buffer containing a carrier protein or stabilizer (e.g. 0.1% BSA, 10%FBS, 5%HSA or 5% trehalose solution), protein aliquots should be stored at -20°C or -80°C for 3-6 months. Avoid repeated freeze/thaw cycles.                        |
| <b>UniProt ID:</b>                           | <a href="#">P09535</a>  |
| <b>Synonyms:</b>                             | AL033362, Igf-2, M6pr, Mpr, Peg, Peg2   |



[View online »](#)

**Summary:**

Mouse Insulin Like Growth Factors 2 (IGF-II) is a 7.34 kDa member of the Insulin-like Growth Factors with 67 amino acid residues. IGF-II is mainly expressed from early embryonic somatic tissues, liver, and epithelial cells lining the surface of the brain. IGF-II is mediating the embryonic development and placental growth, while also promoting tumor growth. IGF-II affects regulation of cell proliferation, growth, migration, differentiation and survival via binding to IGF-I receptor.

**Product images:**

SDS- PAGE analysis of recombinant mouse IGF-II