

## Product datasheet for **TP728328**

### Recombinant IGF-II (Insulin-like growth factor-II) $\square$ Mouse

#### Product data:

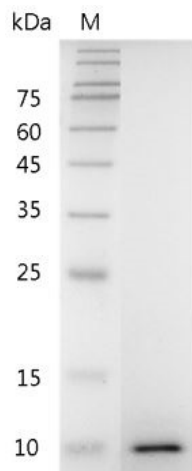
<b>Product Type:</b>	Recombinant Proteins
<b>Description:</b>	Recombinant IGF-II (Insulin-like growth factor-II) $\square$ Mouse
<b>Species:</b>	Mouse
<b>Expression Host:</b>	E. coli
<b>Expression cDNA Clone or AA Sequence:</b>	AYGPGETLCGGELVDTLQFVCSDRGFYFSRPSSRANRRSRGIVEECCFRSCDLALLETYCATPAKSE with polyhistidine tag at the N-terminus.
<b>Tag:</b>	His Tag (N-term)
<b>Predicted MW:</b>	The protein has a calculated MW of 8.20 kDa. The protein migrates about 11 kDa under reducing condition (SDS-PAGE analysis).
<b>Purity:</b>	>98% as determined by SDS-PAGE.
<b>Buffer:</b>	The protein was lyophilized from a 0.2 $\mu$ m filtered solution containing 1X PBS, pH 8.0.
<b>Bioactivity:</b>	Measure by its ability to induce MCF-7 cells proliferation. The ED <sub>50</sub> for this effect is <6 ng/mL. The specific activity of recombinant mouse IGF-II is > 1.5 x 10 <sup>5</sup> IU/mg.
<b>Endotoxin:</b>	<0.1 EU per 1 $\mu$ g of the protein by the LAL method.
<b>Reconstitution Method:</b>	Centrifuge at 3000 rpm for 5 mins before opening. It is recommended to reconstitute the lyophilized protein in sterile H <sub>2</sub> O to a concentration not less than 100 $\mu$ g/mL and incubate the stock solution at room temperature for at least 20 mins to ensure sufficient re-dissolved. Do Not Vortex! Vigorous shaking may impair the biological activity of the protein.
<b>Applications:</b>	Cell culture
<b>Storage:</b>	Lyophilized protein should be stored at -20°C for 1 year. Upon reconstitution, store at 2°C to 8°C for up to 1 week. Further dilute in a buffer containing a carrier protein or stabilizer (e.g. 0.1% BSA, 10%FBS, 5%HSA or 5% trehalose solution), protein aliquots should be stored at -20°C or -80°C for 3-6 months. Avoid repeated freeze/thaw cycles.
<b>UniProt ID:</b>	<a href="#">P09535</a>
<b>Synonyms:</b>	AL033362, Igf-2, M6pr, Mpr, Peg, Peg2



[View online »](#)

**Summary:**

Mouse Insulin Like Growth Factors 2 (IGF-II) is a 7.34 kDa member of the Insulin-like Growth Factors with 67 amino acid residues. IGF-II is mainly expressed from early embryonic somatic tissues, liver, and epithelial cells lining the surface of the brain. IGF-II is mediating the embryonic development and placental growth, while also promoting tumor growth. IGF-II affects regulation of cell proliferation, growth, migration, differentiation and survival via binding to IGF-I receptor.

**Product images:**

SDS- PAGE analysis of recombinant mouse IGF-II