

## Product datasheet for **TP728308S**

### Recombinant CXCL12 (C-X-C motif chemokine 12), Mouse

#### Product data:

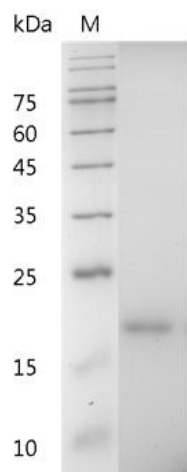
<b>Product Type:</b>	Recombinant Proteins
<b>Description:</b>	Recombinant CXCL12 (C-X-C motif chemokine 12), Mouse
<b>Species:</b>	Mouse
<b>Expression Host:</b>	E. coli
<b>Expression cDNA Clone or AA Sequence:</b>	MGKPVLSYRCPFRFFESHARANVKHLKILNTPNCALQIVARLKNNNRQVCIDPKLKWIQEYLEKALNK with polyhistidine tag at the C-terminus.
<b>Tag:</b>	His Tag (C-term)
<b>Predicted MW:</b>	The protein has a calculated MW of 8.97 kDa. The protein migrates below 8-11 kDa under reducing condition (SDS-PAGE analysis).
<b>Purity:</b>	>98% as determined by SDS-PAGE.
<b>Buffer:</b>	The protein was lyophilized from a 0.2 µm filtered solution containing 1X PBS, pH 7.4.
<b>Bioactivity:</b>	Measure by its ability to chemoattract BaF3 cells transfected with human CXCR4. The ED <sub>50</sub> for this effect is <0.5 ng/mL.
<b>Endotoxin:</b>	<0.1 EU per 1 µg of the protein by the LAL method.
<b>Reconstitution Method:</b>	Centrifuge at 3000 rpm for 5 mins before opening. It is recommended to reconstitute the lyophilized protein in sterile H <sub>2</sub> O to a concentration not less than 100 µg/mL and incubate the stock solution at room temperature for at least 20 mins to ensure sufficient re-dissolved. Do Not Vortex! Vigorous shaking may impair the biological activity of the protein.
<b>Applications:</b>	Cell culture
<b>Storage:</b>	Lyophilized protein should be stored at -20°C for 1 year. Upon reconstitution, store at 2°C to 8°C for up to 1 week. Further dilute in a buffer containing a carrier protein or stabilizer (e.g. 0.1% BSA, 10%FBS, 5%HSA or 5% trehalose solution), protein aliquots should be stored at -20°C or -80°C for 3-6 months. Avoid repeated freeze/thaw cycles.
<b>UniProt ID:</b>	<a href="#">P40224</a>
<b>Synonyms:</b>	PB, PBSF/SD, Pbsf, SDF-, Scyb1, Scyb12, Sdf, Sdf1, TLS, TP, Tlsf, Tpar1



[View online »](#)

**Summary:**

C-X-C motif chemokine 12 (CXCL12) also named stromal cell-derived factor 1 (SDF-1), which is a chemokine of the intercrine alpha family. CXCL12 is a 7.8 kDa protein containing 70 amino acid residues. CXCL12 has a key role in controlling the immune responses which is often induced by the lipopolysaccharide or IL-1. CXCL12 also activates the leukocytes during inflammation. CXCL12 induces the migration and proliferation of cells like hematopoietic progenitor, stem cells and leukocytes.

**Product images:**

SDS- PAGE analysis of recombinant mouse CXCL12