

## Product datasheet for **TP728298**

### Recombinant beta-NGF (Nerve growth factor-beta) $\square$ Mouse

#### Product data:

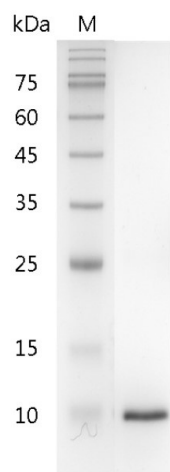
|                                              |                                                                                                                                                                                                                                                                                                                                                                                        |
|----------------------------------------------|----------------------------------------------------------------------------------------------------------------------------------------------------------------------------------------------------------------------------------------------------------------------------------------------------------------------------------------------------------------------------------------|
| <b>Product Type:</b>                         | Recombinant Proteins                                                                                                                                                                                                                                                                                                                                                                   |
| <b>Description:</b>                          | Recombinant beta-NGF (Nerve growth factor-beta) $\square$ Mouse                                                                                                                                                                                                                                                                                                                        |
| <b>Species:</b>                              | Mouse                                                                                                                                                                                                                                                                                                                                                                                  |
| <b>Expression Host:</b>                      | E. coli                                                                                                                                                                                                                                                                                                                                                                                |
| <b>Expression cDNA Clone or AA Sequence:</b> | MSSTHPVFHMGFEFSVCDSVSVWVGDKTTATDIKGKEVTVLAEVNINNSVFRQYFFETKCRASNPVESGCR GIDSKHWNSYCTTTHTFVKALTTDEKQAAWRFIRIDTACVCVLSRKATRRG with polyhistidine tag at the C-terminus.                                                                                                                                                                                                                  |
| <b>Tag:</b>                                  | His Tag (C-term)                                                                                                                                                                                                                                                                                                                                                                       |
| <b>Predicted MW:</b>                         | The protein has a calculated MW of 14.41 kDa. The protein migrates as 11-17 kDa under reducing condition (SDS-PAGE analysis).                                                                                                                                                                                                                                                          |
| <b>Purity:</b>                               | >98% as determined by SDS-PAGE.                                                                                                                                                                                                                                                                                                                                                        |
| <b>Buffer:</b>                               | The protein was lyophilized from a 0.2 $\mu$ m filtered solution containing 20 mM sodium citrate, 0.2 M NaCl, pH 4.5.                                                                                                                                                                                                                                                                  |
| <b>Bioactivity:</b>                          | Measure by its ability to induce TF-1 cells proliferation. The ED <sub>50</sub> for this effect is <1 ng/mL. The specific activity of recombinant mouse beta-NGF is > 1 x 10 <sup>6</sup> IU/mg.                                                                                                                                                                                       |
| <b>Endotoxin:</b>                            | <0.1 EU per 1 $\mu$ g of the protein by the LAL method.                                                                                                                                                                                                                                                                                                                                |
| <b>Reconstitution Method:</b>                | Centrifuge at 3000 rpm for 5 mins before opening. It is recommended to reconstitute the lyophilized protein in sterile H <sub>2</sub> O to a concentration not less than 100 $\mu$ g/mL and incubate the stock solution at room temperature for at least 20 mins to ensure sufficient re-dissolved. Do Not Vortex! Vigorous shaking may impair the biological activity of the protein. |
| <b>Applications:</b>                         | Cell culture                                                                                                                                                                                                                                                                                                                                                                           |
| <b>Storage:</b>                              | Lyophilized protein should be stored at -20°C for 1 year. Upon reconstitution, store at 2°C to 8°C for up to 1 week. Further dilute in a buffer containing a carrier protein or stabilizer (e.g. 0.1% BSA, 10%FBS, 5%HSA or 5% trehalose solution), protein aliquots should be stored at -20°C or -80°C for 3-6 months. Avoid repeated freeze/thaw cycles.                             |
| <b>UniProt ID:</b>                           | <a href="#">P01139</a>                                                                                                                                                                                                                                                                                                                                                                 |
| <b>Synonyms:</b>                             | $\beta$ -Nerve Growth Factor, NGF- $\beta$                                                                                                                                                                                                                                                                                                                                             |



[View online »](#)

**Summary:**

Beta-Nerve Growth Factors (Beta-NGF) is a 27 kDa cytokine with 241 amino acid residues. Beta-NGF belongs to neurotrophin family, and acts as neurotrophic factors. It's composed of alpha, beta, gamma subunits, and the beta subunit is related to its biological activity. Beta-NGF binds to p75 neurotrophin receptor and Trk receptor and their function is about cell death and survival, respectively.

**Product images:**

SDS- PAGE analysis of recombinant mouse beta-NGF