

## Product datasheet for **TP728287M**

### Recombinant TGF beta 3 (Transforming growth factor beta 3), Human

#### Product data:

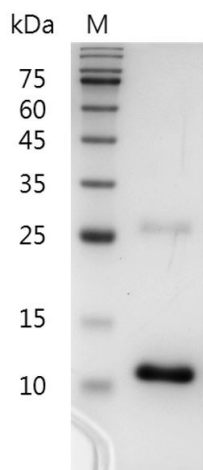
|                                              |                                                                                                                                                                                                                                                                                                                                                                            |
|----------------------------------------------|----------------------------------------------------------------------------------------------------------------------------------------------------------------------------------------------------------------------------------------------------------------------------------------------------------------------------------------------------------------------------|
| <b>Product Type:</b>                         | Recombinant Proteins                                                                                                                                                                                                                                                                                                                                                       |
| <b>Description:</b>                          | Recombinant TGF beta 3 (Transforming growth factor beta 3), Human                                                                                                                                                                                                                                                                                                          |
| <b>Species:</b>                              | Human                                                                                                                                                                                                                                                                                                                                                                      |
| <b>Expression Host:</b>                      | E. coli                                                                                                                                                                                                                                                                                                                                                                    |
| <b>Expression cDNA Clone or AA Sequence:</b> | MALDTNYCFRNLEENCCVRPLYIDFRQDLGWKWWHEPKGYANFCSGPCPYLRADTTTSTVLGLYNTLNPEASASPCCVPQDLEPLTILYVGRTPKVEQLSNMVKCKCS with polyhistidine tag at the C-terminus.                                                                                                                                                                                                                     |
| <b>Tag:</b>                                  | His Tag (C-term)                                                                                                                                                                                                                                                                                                                                                           |
| <b>Predicted MW:</b>                         | The protein has a calculated MW of 13.66 kDa. The protein migrates as 13 kDa under reducing condition (SDS-PAGE analysis).                                                                                                                                                                                                                                                 |
| <b>Purity:</b>                               | >98% as determined by SDS-PAGE.                                                                                                                                                                                                                                                                                                                                            |
| <b>Buffer:</b>                               | The protein was lyophilized from a 0.2 µm filtered solution containing 20 mM sodium citrate, 0.2 M NaCl, pH 4.5.                                                                                                                                                                                                                                                           |
| <b>Bioactivity:</b>                          | Measure by its ability to inhibit IL-4-induce proliferation in HT-2 cells. The ED <sub>50</sub> for this effect is <50 pg/mL. The specific activity of recombinant human TGF beta 3 is > 2 x 10 <sup>7</sup> IU/mg.                                                                                                                                                        |
| <b>Endotoxin:</b>                            | <0.1 EU per 1 µg of the protein by the LAL method.                                                                                                                                                                                                                                                                                                                         |
| <b>Reconstitution Method:</b>                | Centrifuge at 3000 rpm for 5 mins before opening. It is recommended to reconstitute the lyophilized protein in sterile 10 mM HCl to a concentration not less than 100 µg/mL and incubate the stock solution at room temperature for at least 20 mins to ensure sufficient re-dissolved. Do Not Vortex! Vigorous shaking may impair the biological activity of the protein. |
| <b>Applications:</b>                         | Cell culture                                                                                                                                                                                                                                                                                                                                                               |
| <b>Storage:</b>                              | Lyophilized protein should be stored at -20°C for 1 year. Upon reconstitution, store at 2°C to 8°C for up to 1 week. Further dilute in a buffer containing a carrier protein or stabilizer (e.g. 0.1% BSA, 10%FBS, 5%HSA or 5% trehalose solution), protein aliquots should be stored at -20°C or -80°C for 3-6 months. Avoid repeated freeze/thaw cycles.                 |
| <b>UniProt ID:</b>                           | <a href="#">P10600</a>                                                                                                                                                                                                                                                                                                                                                     |
| <b>Synonyms:</b>                             | ARVD, ARVD1, LDS5, RNHF, TGFB3, TGF-B3                                                                                                                                                                                                                                                                                                                                     |



[View online »](#)

**Summary:**

Transforming Growth Factors-Beta 3 (TGF-beta 3) is belonging to the TGF- $\beta$  superfamily TGF- $\beta$ 3 is 86%, 91% similar to TGF- $\beta$ 1 and TGF- $\beta$ 2. TGF-beta 3 is a 12.8 kDa protein containing 412 amino acids, which could inhibitor of DNA synthesis, increases cellular proliferation, essential mediator of EMT in cardiac morphogenesis, and up-regulated by milk stasis and induces apoptosis in mammary gland epithelium during involution.

**Product images:**

SDS- PAGE analysis of recombinant human TGF beta 3