

## Product datasheet for **TP728278L**

### Recombinant Neurturin, Human

#### Product data:

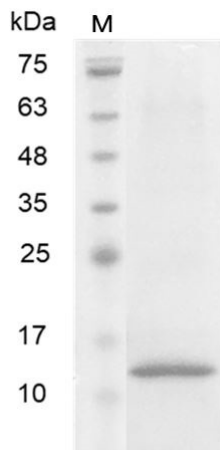
Product Type:	Recombinant Proteins
Description:	Recombinant Neurturin, Human
Species:	Human
Expression Host:	E. coli
Expression cDNA Clone or AA Sequence:	MARLGARPCGLRELEVRVSELGLGYASDETVLFRYCAGACEAAARVYDLGLRRLRQRRRLRRERVRAQPCC RPTAYEDEVSFLEDAHSRYHTVHELRSARECACV with polyhistidine tag at the C-terminus.
Tag:	His Tag (C-term)
Predicted MW:	The protein has a calculated MW of 12.62 kDa. The protein migrates as 13 kDa under reducing condition (SDS-PAGE analysis).
Purity:	>98% as determined by SDS-PAGE.
Buffer:	The protein was lyophilized from a 0.2 µm filtered solution containing 1X PBS, pH 7.4.
Bioactivity:	Measure by its ability to induce proliferation in SH-SY5Y cells. The ED <sub>50</sub> for this effect is <50 ng/mL.
Endotoxin:	<0.1 EU per 1 µg of the protein by the LAL method.
Reconstitution Method:	Centrifuge at 3000 rpm for 5 mins before opening. It is recommended to reconstitute the lyophilized protein in sterile H <sub>2</sub> O to a concentration not less than 100 µg/mL and incubate the stock solution at room temperature for at least 20 mins to ensure sufficient re-dissolved. Do Not Vortex! Vigorous shaking may impair the biological activity of the protein.
Applications:	Cell culture
Storage:	Lyophilized protein should be stored at -20°C for 1 year. Upon reconstitution, store at 2°C to 8°C for up to 1 week. Further dilute in a buffer containing a carrier protein or stabilizer (e.g. 0.1% BSA, 10%FBS, 5%HSA or 5% trehalose solution), protein aliquots should be stored at -20°C or -80°C for 3-6 months. Avoid repeated freeze/thaw cycles.
UniProt ID:	<a href="#">Q99748</a>
Synonyms:	NTN, NRTN



[View online »](#)

**Summary:**

Human Neurturin is a 22 kDa cytokine with 197 amino acid residues. Neurturin belongs to the same TGF-beta (transforming Growth Factors  $\beta$ ) family. When Neurturin binds to GFR $\alpha$ -2 (GPI-linked receptor termed GDNF family receptor  $\alpha$ -2), this complex activates Ret receptor tyrosine kinase and its downstream signaling pathway.

**Product images:**

SDS- PAGE analysis of recombinant human Neurturin