

## Product datasheet for **TP728261L**

### Recombinant IL-32 alpha (Interleukin-32 alpha), Human

#### Product data:

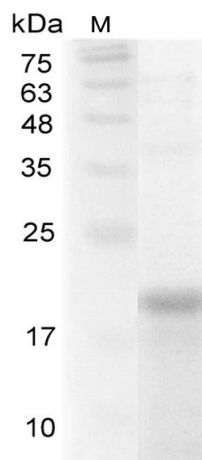
<b>Product Type:</b>	Recombinant Proteins
<b>Description:</b>	Recombinant IL-32 alpha (Interleukin-32 alpha), Human
<b>Species:</b>	Human
<b>Expression Host:</b>	E. coli
<b>Expression cDNA Clone or AA Sequence:</b>	MCFPKVLSDDMKKLKARMHQAIERFYDKMQNAESGRGQVMSSLALEDDFKEGYLETVAAYYEEQHPELTPLLEKERDGLRCRGNRSPVPDVEDPATEEPGESFCDKSYGAPRGDKKEELTPQKCSEPQSSK with polyhistidine tag at the C-terminus .
<b>Tag:</b>	His Tag (C-term)
<b>Predicted MW:</b>	The protein has a calculated MW of 15.72 kDa. The protein migrates as 18 kDa under reducing condition (SDS-PAGE analysis).
<b>Purity:</b>	>98% as determined by SDS-PAGE.
<b>Buffer:</b>	The protein was lyophilized from a 0.2 µm filtered solution containing 1X PBS, pH 8.0.
<b>Bioactivity:</b>	Measure by its ability to induce TNF alpha secretion in RAW264.7 cells. The ED <sub>50</sub> for this effect is <10 µg/mL.
<b>Endotoxin:</b>	<0.1 EU per 1 µg of the protein by the LAL method.
<b>Reconstitution Method:</b>	Centrifuge at 3000 rpm for 5 mins before opening. It is recommended to reconstitute the lyophilized protein in sterile H <sub>2</sub> O to a concentration not less than 100 µg/mL and incubate the stock solution at room temperature for at least 20 mins to ensure sufficient re-dissolved. Do Not Vortex! Vigorous shaking may impair the biological activity of the protein.
<b>Applications:</b>	Cell culture
<b>Storage:</b>	Lyophilized protein should be stored at -20°C for 1 year. Upon reconstitution, store at 2°C to 8°C for up to 1 week. Further dilute in a buffer containing a carrier protein or stabilizer (e.g. 0.1% BSA, 10%FBS, 5%HSA or 5% trehalose solution), protein aliquots should be stored at -20°C or -80°C for 3-6 months. Avoid repeated freeze/thaw cycles.
<b>UniProt ID:</b>	<u><a href="#">P24001-4</a></u>
<b>Synonyms:</b>	IL-32alpha, IL-32beta, IL-32delta, IL-32gamma, NK4, TAIF, TAIFa, TAIFb, TAIFc, TAIFd



[View online »](#)

**Summary:**

Interleukin 32 alpha (IL-32 $\alpha$ ) is an 18 kDa cytokine with 131 amino acid residues and one of the IL-2 splice variants. IL-32 $\alpha$  is primarily secreted from inflammatory cells, such as NK cells, T-cells, peripheral blood mononuclear cells (PBMCs), and monocytes. IL-32 alpha is a proinflammatory cytokine regulating IL-6 by interaction with protein kinase C(PKC). It also interacts with paxillin, integrin, and focal adhesion kinase 1 (FAK 1).

**Product images:**

SDS- PAGE analysis of recombinant human IL-32 alpha