

Product datasheet for **TP728256M**

Recombinant IL-28A (Interleukin-28A), Human

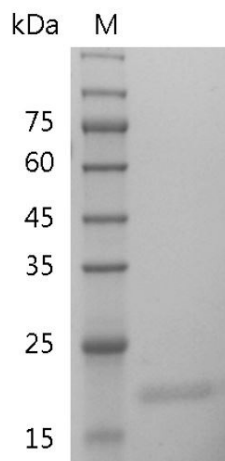
Product data:

Product Type:	Recombinant Proteins
Description:	Recombinant IL-28A (Interleukin-28A), Human
Species:	Human
Expression Host:	E. coli
Expression cDNA Clone or AA Sequence:	MPVARLHGALPDARGCHIAQFKSLSPQELQAFKRAKDALEESLLKDCRCHSRLFPRTWDLRQLQVRRERPMALAEALATLKVLEATADTDPALVDVLDQPLHTLHHILSQFRACIQPQPTAGPRTRGRLHHWLYRLQEA PKKESPGCLEASVTFNLFRLLTRDLNLCVASGDLCV with polyhistidine tag at the C-terminus.
Tag:	His Tag (C-term)
Predicted MW:	The protein has a calculated MW of 20.60 kDa. The protein migrates as 20 kDa under reducing condition (SDS-PAGE analysis).
Purity:	>98% as determined by SDS-PAGE.
Buffer:	The protein was lyophilized from a 0.2 µm filtered solution containing 1X PBS, pH 8.0.
Bioactivity:	Measure by its ability to protect HepG2 cells infected with encephalomyocarditis (EMC) virus. The ED ₅₀ for this effect is <20 ng/mL.
Endotoxin:	<0.1 EU per 1 µg of the protein by the LAL method.
Reconstitution Method:	Centrifuge at 3000 rpm for 5 mins before opening. It is recommended to reconstitute the lyophilized protein in sterile H ₂ O to a concentration not less than 100 µg/mL and incubate the stock solution at room temperature for at least 20 mins to ensure sufficient re-dissolved. Do Not Vortex! Vigorous shaking may impair the biological activity of the protein.
Applications:	Cell culture
Storage:	Lyophilized protein should be stored at -20°C for 1 year. Upon reconstitution, store at 2°C to 8°C for up to 1 week. Further dilute in a buffer containing a carrier protein or stabilizer (e.g. 0.1% BSA, 10%FBS, 5%HSA or 5% trehalose solution), protein aliquots should be stored at -20°C or -80°C for 3-6 months. Avoid repeated freeze/thaw cycles.
UniProt ID:	Q8IZJ0
Synonyms:	IFN-λ2


[View online »](#)

Summary:

Interleukin 28A (IL-28A) predicts a molecular mass of 22.3 kDa. IL-28 comes in two isoforms, IL-28A and IL-28B, and plays a role in immune defense against viruses, including the induction of an antiviral state by turning on Mx proteins, 2',5'-oligoadenylate synthetase as well as ISGF3G.

Product images:


SDS- PAGE analysis of recombinant human IL-28A