

## Product datasheet for **TP728254M**

### Recombinant IL-26 (Interleukin-26), Human

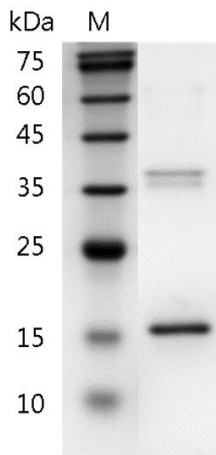
#### Product data:

Product Type:	Recombinant Proteins
Description:	Recombinant IL-26 (Interleukin-26), Human
Species:	Human
Expression Host:	E. coli
Expression cDNA Clone or AA Sequence:	MKHKQSSFTKSCYPRGTLQAVDALYIKAAWHKATIPEDRIKNIRLLKKKTKKQFMKNCQFQEQLLSFFME DVFGQLQLQGCKKIRFVEDFHSLRQKLSHCISCASSAREMKSTRMKRIFYRIGNKGIYKAISELDILLSWIKK LLESSQ with polyhistidine tag at the C-terminus.
Tag:	His Tag (C-term)
Predicted MW:	The protein has a calculated MW of 18.53 kDa. The protein migrates as 18 kDa under reducing condition (SDS-PAGE analysis).
Purity:	>98% as determined by SDS-PAGE.
Buffer:	The protein was lyophilized from a 0.2 µm filtered solution containing 1X PBS, pH 8.0.
Bioactivity:	Measure by its ability to induce IL-10 secretion in COLO205 cells. The ED <sub>50</sub> for this effect is <150 ng/mL.
Endotoxin:	<0.1 EU per 1 µg of the protein by the LAL method.
Reconstitution Method:	Centrifuge at 3000 rpm for 5 mins before opening. It is recommended to reconstitute the lyophilized protein in sterile H <sub>2</sub> O to a concentration not less than 100 µg/mL and incubate the stock solution at room temperature for at least 20 mins to ensure sufficient re-dissolved. Do Not Vortex! Vigorous shaking may impair the biological activity of the protein.
Applications:	Cell culture
Storage:	Lyophilized protein should be stored at -20°C for 1 year. Upon reconstitution, store at 2°C to 8°C for up to 1 week. Further dilute in a buffer containing a carrier protein or stabilizer (e.g. 0.1% BSA, 10%FBS, 5%HSA or 5% trehalose solution), protein aliquots should be stored at -20°C or -80°C for 3-6 months. Avoid repeated freeze/thaw cycles.
UniProt ID:	<a href="#">Q9NPH9</a>
Synonyms:	AK155


[View online »](#)

**Summary:**

Interleukin 26 (IL-26) predicts a molecular mass of 19.8 kDa, is expressed in certain herpesvirus-transformed T cells but not in primary stimulated T cells. T helper 1 cells and Th17 memory CD4+ cells are the major sources of IL-26. More accurately, IL-26 is expressed by pro-inflammatory IL-17 producing T cells in chronically inflamed tissues.

**Product images:**


SDS- PAGE analysis of recombinant human IL-26