

Product datasheet for **TP728250M**

Recombinant IL-22 (Interleukin-22), Human

Product data:

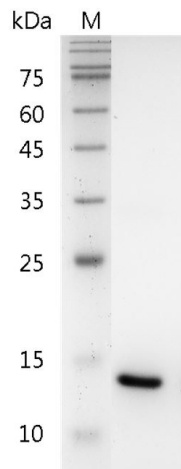
| | |
|--|---|
| Product Type: | Recombinant Proteins |
| Description: | Recombinant IL-22 (Interleukin-22), Human |
| Species: | Human |
| Expression Host: | E. coli |
| Expression cDNA Clone or AA Sequence: | MAPISSHCRLDKSNFQQPYITNRTFMLAKEASLADNNTDVRLIGEKLFHGVSMSERCYLMKQVLNFTLEEV LFPQSDRFQPYMQEVVPLARLSNRLSTCHIEGDDLHIQRNVQKLKDTVKKLGESGEIKAIGELDLLFMSLR NACI with polyhistidine tag at the C-terminus. |
| Tag: | His Tag (C-term) |
| Predicted MW: | The protein has a calculated MW of 17.83 kDa. The protein migrates as 14 kDa under reducing condition (SDS-PAGE analysis). |
| Purity: | >98% as determined by SDS-PAGE. |
| Buffer: | The protein was lyophilized from a 0.2 µm filtered solution containing 1X PBS, pH 8.0. |
| Bioactivity: | Measure by its ability to induce proliferation in A549 cells. The ED ₅₀ for this effect is <0.5 ng/mL. |
| Endotoxin: | <0.1 EU per 1 µg of the protein by the LAL method. |
| Reconstitution Method: | Centrifuge at 3000 rpm for 5 mins before opening. It is recommended to reconstitute the lyophilized protein in sterile H ₂ O to a concentration not less than 100 µg/mL and incubate the stock solution at room temperature for at least 20 mins to ensure sufficient re-dissolved. Do Not Vortex! Vigorous shaking may impair the biological activity of the protein. |
| Applications: | Cell culture |
| Storage: | Lyophilized protein should be stored at -20°C for 1 year. Upon reconstitution, store at 2°C to 8°C for up to 1 week. Further dilute in a buffer containing a carrier protein or stabilizer (e.g. 0.1% BSA, 10%FBS, 5%HSA or 5% trehalose solution), protein aliquots should be stored at -20°C or -80°C for 3-6 months. Avoid repeated freeze/thaw cycles. |
| UniProt ID: | Q9GZX6 |
| Synonyms: | IL-TIF, Cytokine ZCYTO18 |



[View online »](#)

Summary:

Interleukin 22(IL-22) is an α -helical cytokine, predicts a molecular mass of 16.9 kDa. It is produced by T-helper (Th)-17 cells, $\gamma\delta$ T cells, NKT cells and newly described innate lymphoid cells (ILCs). Effects involve stimulation of cell survival, proliferation and synthesis of antimicrobials including S120, Reg3 β , Reg3 γ and defensins.

Product images:

SDS- PAGE analysis of recombinant human IL-22