

## Product datasheet for **TP728239L**

### Recombinant IL-12 p40 (Interleukin-12 p40), Human

#### Product data:

<b>Product Type:</b>	Recombinant Proteins
<b>Description:</b>	Recombinant IL-12 p40 (Interleukin-12 p40), Human
<b>Species:</b>	Human
<b>Expression Host:</b>	E. coli
<b>Expression cDNA Clone or AA Sequence:</b>	MIWELKKDVYVVELDWYPDAPGEMVVLTCDTPEEDGITWTLDQSSEVLGSGKTLTIQVKEFGDAGQYTCH KGGEVLSHSLLLLHKKEDGIWSTDILKDQKEPKNKTLRCEAKNYSGRFTCWWLTTISTDLTFSVKSSRGSS DPQGVTCGAATLSAERVGRDNKEYEYSVECQEDSACPAEESLPIEVMVDAVHKLKYENYTSFFIRDIIKPD PPKNLQLKPLKNSRQVEVSWEYPTWSTPHSYFSLTFCVQVQGKSKREKKDRVFTDKTSATVICRKNASIS VRAQDRYSSSWSEWASVPCS with polyhistidine tag at the C-terminus.
<b>Tag:</b>	His Tag (C-term)
<b>Predicted MW:</b>	The protein has a calculated MW of 35.64 kDa. The protein migrates as 45 kDa under reducing condition (SDS-PAGE analysis).
<b>Purity:</b>	>98% as determined by SDS-PAGE.
<b>Buffer:</b>	The protein was lyophilized from a 0.2 µm filtered solution containing 1X PBS, pH 8.0.
<b>Bioactivity:</b>	Measure by its ability to induce cell proliferation in PHA-activated human peripheral blood lymphocytes (PBMC) using a concentration range of 5-50 ng/mL. Note: Results may vary from different PBMC donors.
<b>Endotoxin:</b>	<0.1 EU per 1 µg of the protein by the LAL method.
<b>Reconstitution Method:</b>	Centrifuge at 3000 rpm for 5 mins before opening. It is recommended to reconstitute the lyophilized protein in sterile H <sub>2</sub> O to a concentration not less than 100 µg/mL and incubate the stock solution at room temperature for at least 20 mins to ensure sufficient re-dissolved. Do Not Vortex! Vigorous shaking may impair the biological activity of the protein.
<b>Applications:</b>	Cell culture
<b>Storage:</b>	Lyophilized protein should be stored at -20°C for 1 year. Upon reconstitution, store at 2°C to 8°C for up to 1 week. Further dilute in a buffer containing a carrier protein or stabilizer (e.g. 0.1% BSA, 10%FBS, 5%HSA or 5% trehalose solution), protein aliquots should be stored at -20°C or -80°C for 3-6 months. Avoid repeated freeze/thaw cycles.
<b>UniProt ID:</b>	<a href="#">P29460</a>

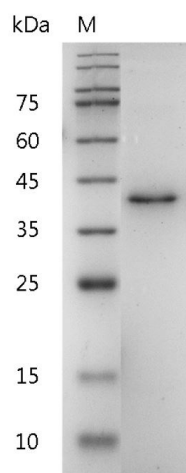


[View online »](#)

**Synonyms:** Interleukin-12 subunit beta, IL-12 subunit p40, IL-12B, Cytotoxic Lymphocyte Maturation Factor 40 kDa subunit (CLMF p40), NK cell Stimulating Factor Chain 2

**Summary:** Interleukin 12 (IL-12) is a pro-inflammatory cytokine with a molecular weight of 70 kDa composed of two subunits, IL-12p35 (35 kDa) and IL-12p40 (40 kDa). IL-12p40 is induced in excess over the other subunits of IL-12 and IL-23 and can exist in a monomeric or homodimer form.

**Product images:**



SDS- PAGE analysis of recombinant human IL-12 p40