

## Product datasheet for **TP728234**

### Recombinant IL-1 beta (Interleukin-1 beta), Human

#### Product data:

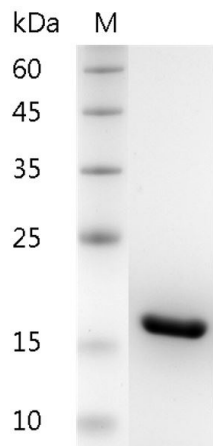
<b>Product Type:</b>	Recombinant Proteins
<b>Description:</b>	Recombinant IL-1 beta (Interleukin-1 beta), Human
<b>Species:</b>	Human
<b>Expression Host:</b>	E. coli
<b>Expression cDNA Clone or AA Sequence:</b>	MASAPVRSLNCTLRDSQQKSLVMSGPYELKALHLQGQDMEQQVWFSMSFVQGEESNDKIPVALGLKEK NLYLSCVLKDDKPTLQLESVDPKNYPKKKMEKRFVFNKIEINNKLFEFESAQFPNWWYISTSQAENMPVFLGG TKGQDITDFTMQFVSS with polyhistidine tag at the C-terminus.
<b>Tag:</b>	His Tag (C-term)
<b>Predicted MW:</b>	The protein has a calculated MW of 18.5 kDa. The protein migrates as 17 kDa under reducing condition (SDS-PAGE analysis).
<b>Purity:</b>	>98% as determined by SDS-PAGE.
<b>Buffer:</b>	The protein was lyophilized from a 0.2 µm filtered solution containing 1X PBS, pH 8.0.
<b>Bioactivity:</b>	Measure by its ability to induce IL-8 secretion in HT29 cells. The ED <sub>50</sub> for this effect is <2.0 ng/mL. The specific activity of recombinant human IL-1 beta is approximately >3 x 10 <sup>7</sup> IU/mg.
<b>Endotoxin:</b>	<0.1 EU per 1 µg of the protein by the LAL method.
<b>Reconstitution Method:</b>	Centrifuge at 3000 rpm for 5 mins before opening. It is recommended to reconstitute the lyophilized protein in sterile H <sub>2</sub> O to a concentration not less than 100 µg/mL and incubate the stock solution at room temperature for at least 20 mins to ensure sufficient re-dissolved. Do Not Vortex! Vigorous shaking may impair the biological activity of the protein.
<b>Applications:</b>	Cell culture
<b>Storage:</b>	Lyophilized protein should be stored at -20°C for 1 year. Upon reconstitution, store at 2°C to 8°C for up to 1 week. Further dilute in a buffer containing a carrier protein or stabilizer (e.g. 0.1% BSA, 10%FBS, 5%HSA or 5% trehalose solution), protein aliquots should be stored at -20°C or -80°C for 3-6 months. Avoid repeated freeze/thaw cycles.
<b>UniProt ID:</b>	<a href="#">P01584</a>
<b>Synonyms:</b>	Catabolin, Lymphocyte-Activating Factor (LAF), Endogenous Pyrogen (EP), Leukocyte Endoge_x005f_x005f_x005f_x005f_x0002_nous Mediator (LEM), Mononuclear Cell Factor (MCF)



[View online »](#)

**Summary:**

Interleukin-1 beta (IL-1 $\beta$ ) is a major cytokine expressed in macrophage, NK cells, monocytes, and neutrophils. It also plays fundamental role in inflammatory response, including monocyte activation, which is essential for the host defense and pathogen and pathogen resistance. Pro-IL-1 $\beta$  is cleaved by cytosolic caspase 1 to form mature IL-1 $\beta$ .

**Product images:**

SDS- PAGE analysis of recombinant human IL-1 beta