

## Product datasheet for **TP728219**

### Recombinant G-CSF (Granulocyte colony-stimulating factor), Human

#### Product data:

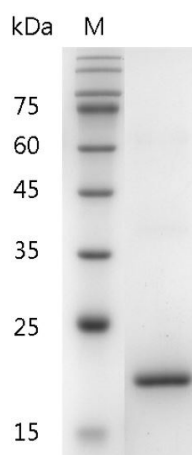
<b>Product Type:</b>	Recombinant Proteins
<b>Description:</b>	Recombinant G-CSF (Granulocyte colony-stimulating factor), Human
<b>Species:</b>	Human
<b>Expression Host:</b>	E. coli
<b>Expression cDNA Clone or AA Sequence:</b>	TPLGPASSLPQSFLKCLEQVRKIQGDGAALQEKLKLCATYKLCHEPELVLLGHSLGIPWAPLSSCPSQALQLA GCLSQLHSGFLYQGLLQALEGISPELGPTLDTLQLDVADFATTIWQQMEELGMAPALQPTQGAMPAFAS AFQRRAGGVLVASHLQSFLEVSYRVLRLHLAQP with polyhistidine tag at the N-terminus.
<b>Tag:</b>	His Tag (N-term)
<b>Predicted MW:</b>	The protein has a calculated MW of 19.48 kDa. The protein migrates as 21kDa under reducing condition (SDS-PAGE analysis).
<b>Purity:</b>	>98% as determined by SDS-PAGE.
<b>Buffer:</b>	The protein was lyophilized from a 0.2 µm filtered solution containing 1X PBS, pH 7.4.
<b>Bioactivity:</b>	Measure by its ability to induce proliferation in NFS-60 cells. The ED <sub>50</sub> for this effect is <50 pg/mL. The specific activity of recombinant human G-CSF is > 2 x 10 <sup>7</sup> IU/mg.
<b>Endotoxin:</b>	<0.1 EU per 1 µg of the protein by the LAL method.
<b>Reconstitution Method:</b>	Centrifuge at 3000 rpm for 5 mins before opening. It is recommended to reconstitute the lyophilized protein in sterile H <sub>2</sub> O to a concentration not less than 100 µg/mL and incubate the stock solution at room temperature for at least 20 mins to ensure sufficient re-dissolved. Do Not Vortex! Vigorous shaking may impair the biological activity of the protein.
<b>Applications:</b>	Cell culture
<b>Storage:</b>	Lyophilized protein should be stored at -20°C for 1 year. Upon reconstitution, store at 2°C to 8°C for up to 1 week. Further dilute in a buffer containing a carrier protein or stabilizer (e.g. 0.1% BSA, 10%FBS, 5%HSA or 5% trehalose solution), protein aliquots should be stored at -20°C or -80°C for 3-6 months. Avoid repeated freeze/thaw cycles.
<b>RefSeq:</b>	<a href="#">NP_757373</a>
<b>UniProt ID:</b>	<a href="#">P09919</a> , <a href="#">Q6FH65</a> , <a href="#">Q8N4W3</a>
<b>Synonyms:</b>	CSF-3, MGI-1G, GM-CSF beta, pluripoietin



[View online »](#)

**Summary:**

Granulocyte colony-stimulating factor (G-CSF) is a member of the CSF family of glycoproteins and makes the bone marrow produce more white blood cells so it can reduce the risk of infection after some types of cancer treatment also is an established useful clinical agent for increasing neutrophilic granulocytes levels. G-CSF is a 18.67 kDa protein having 207 amino acid which secreted by monocytes, macrophages, fibroblasts, and endothelial cells, regulates cell growth, maturation, development of myeloid cells.

**Product images:**

SDS- PAGE analysis of recombinant human G-CSF