

## Product datasheet for **TP728217L**

### Recombinant Galectin-8, Human

#### Product data:

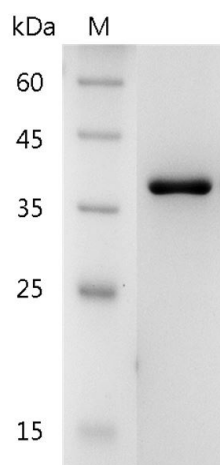
Product Type:	Recombinant Proteins
Description:	Recombinant Galectin-8, Human
Species:	Human
Expression Host:	E. coli
Expression cDNA Clone or AA Sequence:	MLSLNNLQNIYNPVIVFGTIPDQLDPGTLVIRGHVPSDADRFQVDLQNGSSMKPRADVAHFHFNPRFKR AGCIVCNTLINEKWGREEITYDTPFKREKSFEIVIMVLKDKFQVAVNGKHTLLYGHRIGPEKIDTLGIYGVNI HSI GFSFSSDLQSTQASSLELTEISRENVPKSGTPQLRLPFAARLNTPMGPGRTVVVKGEVNANAKSFNVD LLAGKSKDIALHLNPRLNIAKAFVRNSFLQESWGEEERNITSFPFSPGMYFEMIIYCDVREFKVAVNGVHSLEY KHRFKESSIDTLEINGDIHLLEVRWS with polyhistidine tag at the N-terminus.
Tag:	His Tag (N-term)
Predicted MW:	The protein has a calculated MW of 36.6 kDa. The protein migrates as 34 kDa under reducing condition (SDS-PAGE analysis).
Purity:	>98% as determined by SDS-PAGE.
Buffer:	The protein was lyophilized from a 0.2 µm filtered solution containing 1X PBS, pH 7.4.
Bioactivity:	Measured by its ability to agglutinate human red blood cells. The ED <sub>50</sub> for this effect is <8 µg/mL.
Endotoxin:	<0.1 EU per 1 µg of the protein by the LAL method.
Reconstitution Method:	Centrifuge at 3000 rpm for 5 mins before opening. It is recommended to reconstitute the lyophilized protein in sterile H <sub>2</sub> O to a concentration not less than 100 µg/mL and incubate the stock solution at room temperature for at least 20 mins to ensure sufficient re-dissolved. Do Not Vortex! Vigorous shaking may impair the biological activity of the protein.
Applications:	Cell culture
Storage:	Lyophilized protein should be stored at -20°C for 1 year. Upon reconstitution, store at 2°C to 8°C for up to 1 week. Further dilute in a buffer containing a carrier protein or stabilizer (e.g. 0.1% BSA, 10%FBS, 5%HSA or 5% trehalose solution), protein aliquots should be stored at -20°C or -80°C for 3-6 months. Avoid repeated freeze/thaw cycles.
UniProt ID:	<a href="#">O00214</a>
Synonyms:	LGALS8, Gal-8, PCTA-1, PCTA1, Po66-CBP



[View online »](#)

**Summary:**

Galectin-8 (Gal-8) is a lectin family member and is one of the tandem repeat-type galectins containing two carbohydrate recognition domains (CRD) connected by a linker region in a single peptide chain. The CRD is responsible for  $\beta$ -galactoside binding, and the binding partners for galectin-8 have been identified, including CD44 and a subset of integrins. Galectin-8 and integrins form complexes, subsequently leading to phosphorylation of paxillin and focal adhesion kinase (FAK), which activates signal pathways including MAPK-ERK and PI3K-AKT pathways. Galectin-8 is constitutively presented in the Liver, kidney, cardiac muscle, lung, and brain. Galectin-8 serves as an immunosuppressive protective role against autoimmune CNS inflammation, regulating the balance of Th17 and Th1 polarization.

**Product images:**

SDS- PAGE analysis of recombinant human Galectin-8