

Product datasheet for **TP728215M**

Recombinant Galectin-4, Human

Product data:

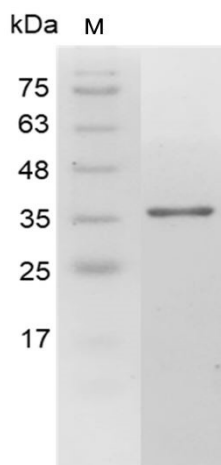
Product Type:	Recombinant Proteins
Description:	Recombinant Galectin-4, Human
Species:	Human
Expression Host:	E. coli
Expression cDNA Clone or AA Sequence:	AYVPAPGYQPTYNPTLPYYQPIPGGLNVGMSVYIQGVASEHMKRFFVNFVVGQDPGSDVAFHFNPRFDG WDKVVFNTLQGGKWGSEERKRSMPFKKGAAFELVFIVLAEHYKVVVNGNPFYEYGHRLPLQMVTHLQVD GDLQLQSINFIGGQPLRPQGPPMPPYPGPGHCHQQLNSLPTMEGPPTFNPPVPYFGRLLQGGLTARRT IIKGYVPPTGKSFAINFKVGSSGDIALHINPRMGNGTVVRNSLLNGSWGSEEEKKITHNPFPGPGQFFDLSIRC GLDRFKVYANGQHLLFDFAHRLSAFQRVDTLEIQGDVTLISYVQI with polyhistidine tag at the N-terminus.
Tag:	His Tag (N-term)
Predicted MW:	The protein has a calculated MW of 36.8 kDa. The protein migrates as 37 kDa under reducing condition (SDS-PAGE analysis).
Purity:	>98% as determined by SDS-PAGE.
Buffer:	The protein was lyophilized from a 0.2 µm filtered solution containing 1X PBS, pH 7.4.
Bioactivity:	Measured by its ability to agglutinate human red blood cells. The ED ₅₀ for this effect is <8 µg/mL.
Endotoxin:	<0.1 EU per 1 µg of the protein by the LAL method.
Reconstitution Method:	Centrifuge at 3000 rpm for 5 mins before opening. It is recommended to reconstitute the lyophilized protein in sterile H ₂ O to a concentration not less than 100 µg/mL and incubate the stock solution at room temperature for at least 20 mins to ensure sufficient re-dissolved. Do Not Vortex! Vigorous shaking may impair the biological activity of the protein.
Applications:	Cell culture
Storage:	Lyophilized protein should be stored at -20°C for 1 year. Upon reconstitution, store at 2°C to 8°C for up to 1 week. Further dilute in a buffer containing a carrier protein or stabilizer (e.g. 0.1% BSA, 10%FBS, 5%HSA or 5% trehalose solution), protein aliquots should be stored at -20°C or -80°C for 3-6 months. Avoid repeated freeze/thaw cycles.
UniProt ID:	P56470
Synonyms:	LGALS4, GAL4, L36LBP



[View online »](#)

Summary:

Galectin-4 (Gal-4) is a lectin family member and is one of the tandem repeat-type galectins containing two carbohydrate recognition domains (CRD) connected by a linker region in a single peptide chain. The CRD is responsible for β -galactoside binding, and several binding partners for galectin-4 have been identified, including human blood group antigens, glycoproteins, mucin like membrane MUC1, glycosphingolipids, and sulfated cholesterol. Galectin-4 is constitutively presented in the intestine and stomach, uterine epithelial cells, blood vessel walls, hippocampal and cortical neurons. It serves important functions in numerous biological activities including lipid raft stabilization, protein apical trafficking, cell adhesion, wound healing, intestinal inflammation, and host defense.

Product images:

SDS- PAGE analysis of recombinant human Galectin-4