

## Product datasheet for **TP728178M**

### Recombinant CXCL2 (C-X-C motif chemokine 2), Human

#### Product data:

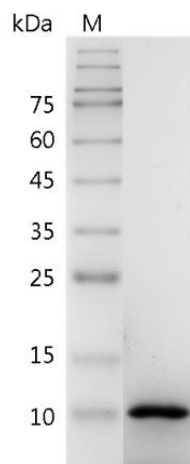
<b>Product Type:</b>	Recombinant Proteins
<b>Description:</b>	Recombinant CXCL2 (C-X-C motif chemokine 2), Human
<b>Species:</b>	Human
<b>Expression Host:</b>	E. coli
<b>Expression cDNA Clone or AA Sequence:</b>	APLATELRCQCLQTLQGIHLKNIQSVKVKSPGPHCAQTEVIATLKNGQKACLNPASPMVKKIIKMLKNGK SN with polyhistidine tag at the N-terminus.
<b>Tag:</b>	His Tag (N-term)
<b>Predicted MW:</b>	The protein has a calculated MW of 8.70 kDa. The protein migrates as 12 kDa under reducing condition (SDS-PAGE analysis).
<b>Purity:</b>	>98% as determined by SDS-PAGE.
<b>Buffer:</b>	The protein was lyophilized from a 0.2 µm filtered solution containing 1X PBS, pH 7.4.
<b>Bioactivity:</b>	Measure by its ability to chemoattract human PBMCs using a concentration range of 10.0 - 100.0 ng/mL. Note: Results may vary from different PBMC donors.
<b>Endotoxin:</b>	<0.1 EU per 1 µg of the protein by the LAL method.
<b>Reconstitution Method:</b>	Centrifuge at 3000 rpm for 5 mins before opening. It is recommended to reconstitute the lyophilized protein in sterile H <sub>2</sub> O to a concentration not less than 100 µg/mL and incubate the stock solution at room temperature for at least 20 mins to ensure sufficient re-dissolved. Do Not Vortex! Vigorous shaking may impair the biological activity of the protein.
<b>Applications:</b>	Cell culture
<b>Storage:</b>	Lyophilized protein should be stored at -20°C for 1 year. Upon reconstitution, store at 2°C to 8°C for up to 1 week. Further dilute in a buffer containing a carrier protein or stabilizer (e.g. 0.1% BSA, 10%FBS, 5%HSA or 5% trehalose solution), protein aliquots should be stored at -20°C or -80°C for 3-6 months. Avoid repeated freeze/thaw cycles.
<b>UniProt ID:</b>	<a href="#">P19875</a>
<b>Synonyms:</b>	Growth Regulated Protein/Melanoma Growth Stimulatory Activity,GRO-β: MGSAβ,MIP-2α, GRO2



[View online »](#)

**Summary:**

C-X-C motif chemokine 2 (CXCL2) also named Growth-regulated oncogene beta (GRO $\beta$ ), which is a chemokine of the intercrine alpha family. CXCL2 is a 8 kDa protein containing 73 amino acid residues. CXCL2 is expressed in immune cells such as macrophages and monocytes. CXCL2 plays an important role with immune responses and cancer progression. CXCL2 activates the cell signal transduction with casepas1 that affect the cell proliferation, differentiation and migration.

**Product images:**

SDS- PAGE analysis of recombinant human CXCL2