

Product datasheet for **TP728174M**

Recombinant CXCL10 (C-X-C motif chemokine 10), Human

Product data:

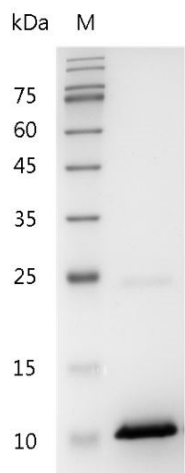
Product Type:	Recombinant Proteins
Description:	Recombinant CXCL10 (C-X-C motif chemokine 10), Human
Species:	Human
Expression Host:	E. coli
Expression cDNA Clone or AA Sequence:	VPLSRTVRCTCISISNQPVNPRSLEKLEIIPASQFCPRVEIATMKKKGEKRCLNPESKAIKNNLLKAVSKERSKR SP with polyhistidine tag at the N-terminus.
Tag:	His Tag (N-term)
Predicted MW:	The protein has a calculated MW of 9.45 kDa. The protein migrates as 9-11 kDa under reducing condition (SDS-PAGE analysis).
Purity:	>98% as determined by SDS-PAGE.
Buffer:	The protein was lyophilized from a 0.2 µm filtered solution containing 1X PBS, pH 7.4.
Bioactivity:	Measure by its ability to chemoattract human PBMCs using a concentration range of 10.0 - 100.0 ng/mL. Note: Results may vary from different PBMC donors.
Endotoxin:	<0.1 EU per 1 µg of the protein by the LAL method.
Reconstitution Method:	Centrifuge at 3000 rpm for 5 mins before opening. It is recommended to reconstitute the lyophilized protein in sterile H ₂ O to a concentration not less than 100 µg/mL and incubate the stock solution at room temperature for at least 20 mins to ensure sufficient re-dissolved. Do Not Vortex! Vigorous shaking may impair the biological activity of the protein.
Applications:	Cell culture
Storage:	Lyophilized protein should be stored at -20°C for 1 year. Upon reconstitution, store at 2°C to 8°C for up to 1 week. Further dilute in a buffer containing a carrier protein or stabilizer (e.g. 0.1% BSA, 10%FBS, 5%HSA or 5% trehalose solution), protein aliquots should be stored at -20°C or -80°C for 3-6 months. Avoid repeated freeze/thaw cycles.
UniProt ID:	P02778
Synonyms:	IP-10, Gamma-Interferon Inducible Protein 10, Crg-2



[View online »](#)

Summary:

C-X-C motif chemokine 10 (CXCL10) also named Interferon gamma-induced protein 10 (IP-10), which is a chemokine of the intercrine alpha family. CXCL10 is a 8.55kDa protein containing 77 amino acid residues. CXCL10 is produced by the several cell types like monocytes and endothelial cells, which are responded for IFN γ . CXCL10 is a chemotaxis for T cells, NK cells and macrophages. CXCL10 also binds the CXCR3 that induce the cell migration and activation like T cells and dendritic cells.

Product images:

SDS- PAGE analysis of recombinant human CXCL10