

## Product datasheet for **TP728170M**

### Recombinant CD326, Human

#### Product data:

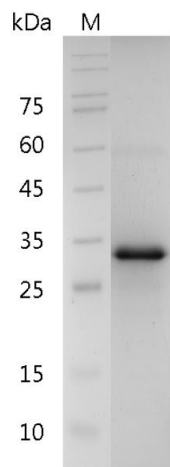
<b>Product Type:</b>	Recombinant Proteins
<b>Description:</b>	Recombinant CD326, Human
<b>Species:</b>	Human
<b>Expression Host:</b>	E. coli
<b>Expression cDNA Clone or AA Sequence:</b>	MQEEVCENYKLAVNCFVNNNRQCQCTSVGAQNTVICSKLAAKCLVMKAEMNGSKLGRRAKPEGALQNNDGLYDPDCDESGLFKAKQCNGTSMCWCVNTAGVRRTDKDTEITCSERVRTYWIIEELKHKAREKPYDSKSLRTALQKEITTRYQLDPKFITSILYENNVITIDLQNSSQKTQNDVDIADVAYFEKDVKGESLFHSHKMDLTVNGEQLDLDPGQTLIYYVDEKAPEFSMQGLK with polyhistidine tag at the C-terminus.
<b>Tag:</b>	His Tag (C-term)
<b>Predicted MW:</b>	The protein has a calculated MW of 28.36 kDa. The protein migrates as 30 kDa under reducing condition (SDS-PAGE analysis).
<b>Purity:</b>	>95% as determined by SDS-PAGE.
<b>Buffer:</b>	The protein was lyophilized from a 0.2 µm filtered solution containing 1X PBS, pH 8.0.
<b>Bioactivity:</b>	Measure by the ability of the immobilized protein to support the adhesion of the 3T3 cells. The ED <sub>50</sub> for this effect is 0.2-1.7 ng/mL.
<b>Endotoxin:</b>	<0.1 EU per 1 µg of the protein by the LAL method.
<b>Reconstitution Method:</b>	Centrifuge at 3000 rpm for 5 mins before opening. It is recommended to reconstitute the lyophilized protein in sterile H <sub>2</sub> O to a concentration not less than 100 µg/mL and incubate the stock solution at room temperature for at least 20 mins to ensure sufficient re-dissolved. Do Not Vortex! Vigorous shaking may impair the biological activity of the protein.
<b>Applications:</b>	Cell culture
<b>Storage:</b>	Lyophilized protein should be stored at -20°C for 1 year. Upon reconstitution, store at 2°C to 8°C for up to 1 week. Further dilute in a buffer containing a carrier protein or stabilizer (e.g. 0.1% BSA, 10%FBS, 5%HSA or 5% trehalose solution), protein aliquots should be stored at -20°C or -80°C for 3-6 months. Avoid repeated freeze/thaw cycles.
<b>UniProt ID:</b>	<a href="#">P16422</a>
<b>Synonyms:</b>	EPCAM, DIAR5, EGP-2, EGP314, EGP40, ESA, HNPCC8, KS1/4, KSA, M4S1, MIC18, MK-1, TACSTD1, TROP1



[View online »](#)

**Summary:**

Human CD326 also called epithelial cellular adhesion molecule (EpCAM), which is a 28 kDa protein containing 242 amino acid residues. Human CD326 is a transmembrane glycoprotein, which is a marker of cancer. CD326 induces the expression of c-myc, cyclins A & E and e-fabp which is involved the cancer cell proliferation and migration.

**Product images:**

SDS- PAGE analysis of recombinant human CD326