

Product datasheet for **TP728167**

Recombinant CCL4 (C-C motif chemokine ligand 4), Human

Product data:

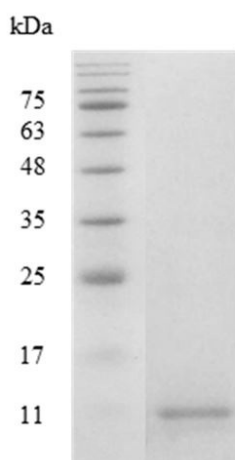
| | |
|--|---|
| Product Type: | Recombinant Proteins |
| Description: | Recombinant CCL4 (C-C motif chemokine ligand 4), Human |
| Species: | Human |
| Expression Host: | E. coli |
| Expression cDNA Clone or AA Sequence: | APMGSDPPTACCFSTARKLPHNFVDDYETSSLCSQPAVVFQTKRGKQVCADPSESWWQEYVYDLELN. |
| Tag: | Tag Free |
| Predicted MW: | The protein has a calculated MW of 7.75 kDa. The protein migrates as 11 kDa under reducing condition (SDS-PAGE analysis). |
| Purity: | >98% as determined by SDS-PAGE. |
| Buffer: | The protein was lyophilized from a 0.2 µm filtered solution containing 50 mM Tris and 150 mM NaCl, pH 8.5. |
| Bioactivity: | Measure by its ability to chemoattract BaF3 cells transfected with human CCR5. The ED ₅₀ for this effect is <10 ng/mL. |
| Endotoxin: | <0.1 EU per 1 µg of the protein by the LAL method. |
| Reconstitution Method: | Centrifuge at 3000 rpm for 5 mins before opening. It is recommended to reconstitute the lyophilized protein in sterile H ₂ O to a concentration not less than 100 µg/mL and incubate the stock solution at room temperature for at least 20 mins to ensure sufficient re-dissolved. Do Not Vortex! Vigorous shaking may impair the biological activity of the protein. |
| Applications: | Cell culture |
| Storage: | Lyophilized protein should be stored at -20°C for 1 year. Upon reconstitution, store at 2°C to 8°C for up to 1 week. Further dilute in a buffer containing a carrier protein or stabilizer (e.g. 0.1% BSA, 10%FBS, 5%HSA or 5% trehalose solution), protein aliquots should be stored at -20°C or -80°C for 3-6 months. Avoid repeated freeze/thaw cycles. |
| UniProt ID: | P13236 |
| Synonyms: | MIP-1b; Macrophage Inflammatory Protein-1β, ACT-2 |



[View online »](#)

Summary:

C-C Motif Chemokine Ligand 4 (CCL4) is a 7.66 kDa cytokine with 69 amino acid residues. CCL4, also named macrophage inflammatory protein-1 β (MIP-1 β), is mainly secreted from neutrophils, monocytes, B cells, T cells, fibroblasts, endothelial cells and epithelial cells. CCL4 recruits various immune cells like natural killer cells, monocytes, and neutrophils when CCL4 binds to CCR5. In addition, CCL4 mediates lymphocyte adhesion by Rac1 /Cdc42 signaling pathway and plays critical roles in different biological functions like maintenance of cell polarity, regulation of calcium ion transport and response to viruses.

Product images:

SDS- PAGE analysis of recombinant human CCL4