

## Product datasheet for **TP728166**

### Recombinant CCL3 (C-C motif chemokine ligand 3), Human

#### Product data:

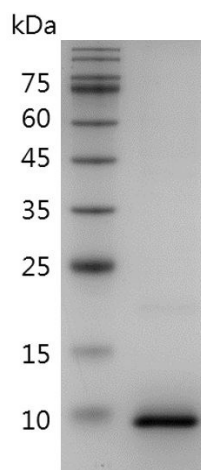
<b>Product Type:</b>	Recombinant Proteins
<b>Description:</b>	Recombinant CCL3 (C-C motif chemokine ligand 3), Human
<b>Species:</b>	Human
<b>Expression Host:</b>	E. coli
<b>Expression cDNA Clone or AA Sequence:</b>	ADTPTACCFSYTSRQIPQNFADYFETSSQCSKPGVIFLTKRSRQVCADPSEEWVQKYVSDLELSA with polyhistidine tag at the N-terminus
<b>Tag:</b>	His Tag (N-term)
<b>Predicted MW:</b>	The protein has a calculated MW of 8.4 kDa. The protein migrates as 8-11 kDa under reducing condition (SDS-PAGE analysis).
<b>Purity:</b>	>95% as determined by SDS-PAGE.
<b>Buffer:</b>	The protein was lyophilized from a 0.2 µm filtered solution containing 1×PBS, pH 8.5.
<b>Bioactivity:</b>	Measure by its ability to chemoattract human PBMC using a concentration range of 5 -50 ng/mL.
<b>Endotoxin:</b>	<0.1 EU per 1 µg of the protein by the LAL method.
<b>Reconstitution Method:</b>	Centrifuge at 3000 rpm for 5 mins before opening. It is recommended to reconstitute the lyophilized protein in sterile H <sub>2</sub> O to a concentration not less than 100 µg/mL and incubate the stock solution at room temperature for at least 20 mins to ensure sufficient re-dissolved. Do Not Vortex! Vigorous shaking may impair the biological activity of the protein.
<b>Applications:</b>	Cell culture
<b>Storage:</b>	Lyophilized protein should be stored at -20°C for 1 year. Upon reconstitution, store at 2°C to 8°C for up to 1 week. Further dilute in a buffer containing a carrier protein or stabilizer (e.g. 0.1% BSA, 10%FBS, 5%HSA or 5% trehalose solution), protein aliquots should be stored at -20°C or -80°C for 3-6 months. Avoid repeated freeze/thaw cycles.
<b>UniProt ID:</b>	<a href="#">P10147</a>
<b>Synonyms:</b>	MIP-1a; Macrophage Inflammatory Protein-1α, LD78α



[View online »](#)

**Summary:**

C-C Motif Chemokine Ligand 3 (CCL3) is a 7.33Da cytokine with 66 amino acid residues. CCL3 is also called macrophage inflammatory protein 1-alpha (MIP-1-alpha) and is expressed in bone marrow and liver. Upon binding to the receptor, CCR1, CCR4, or CCR5, CCL3 plays an essential role in acute inflammatory responses like recruitment and activation of polymorphonuclear leukocytes and induction of monophasic fever. In addition, CCL3 participates in resistance to type 1 virus infection, mediation of MAPK signaling pathway, cell-cell signaling, and calcium-mediated signaling.

**Product images:**

SDS- PAGE analysis of recombinant human CCL3