

Product datasheet for **TP728165M**

Recombinant CCL2 (C-C motif chemokine ligand 2), Human

Product data:

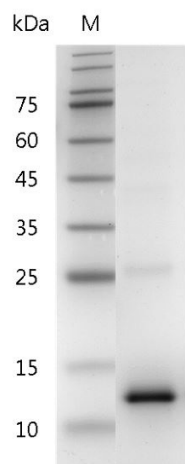
| | |
|--|---|
| Product Type: | Recombinant Proteins |
| Description: | Recombinant CCL2 (C-C motif chemokine ligand 2), Human |
| Species: | Human |
| Expression Host: | E. coli |
| Expression cDNA Clone or AA Sequence: | QPDAINAPVTCCYNFTNRKISVQRLASYRRITSSKCPKEAVIFKTIVAKEICADPKQKWWQDSMDHLDKQT QTPKT with polyhistidine tag at the N-terminus. |
| Tag: | His Tag (N-term) |
| Predicted MW: | The protein has a calculated MW of 9.49 kDa. The protein migrates as 11 kDa under reducing condition (SDS-PAGE analysis). |
| Purity: | >95% as determined by SDS-PAGE. |
| Buffer: | The protein was lyophilized from a 0.2 µm filtered solution containing 1X PBS, pH 7.4. |
| Bioactivity: | Measure by its ability to chemoattract BaF3 cells transfected with human CCR2A. The ED ₅₀ for this effect is <20 ng/mL. |
| Endotoxin: | <0.1 EU per 1 µg of the protein by the LAL method. |
| Reconstitution Method: | Centrifuge at 3000 rpm for 5 mins before opening. It is recommended to reconstitute the lyophilized protein in sterile H ₂ O to a concentration not less than 100 µg/mL and incubate the stock solution at room temperature for at least 20 mins to ensure sufficient re-dissolved. Do Not Vortex! Vigorous shaking may impair the biological activity of the protein. |
| Applications: | Cell culture |
| Storage: | Lyophilized protein should be stored at -20°C for 1 year. Upon reconstitution, store at 2°C to 8°C for up to 1 week. Further dilute in a buffer containing a carrier protein or stabilizer (e.g. 0.1% BSA, 10%FBS, 5%HSA or 5% trehalose solution), protein aliquots should be stored at -20°C or -80°C for 3-6 months. Avoid repeated freeze/thaw cycles. |
| UniProt ID: | P13500.1 |
| Synonyms: | Monocyte Chemotactic Protein-1,MCP-1 |



[View online »](#)

Summary:

C-C Motif Chemokine Ligand 2 (CCL2) is an 8.44 kDa cytokine with 76 amino acid residues and is also known as monocyte chemoattractant protein 1 (MCP1). The CCL2 secreted from monocytes, macrophages, and dendritic cells. Upon binding with CCR4, it regulates many biological functions, such as recruitments of monocytes, memory T cells, and dendritic cells, response to TNF- α and Interferon- γ , angiogenesis, cellular homeostasis, and cytoskeleton organization.

Product images:

SDS- PAGE analysis of recombinant human CCL2