

Product datasheet for **TP728153M**

Recombinant BMP-13 (Bone morphogenetic protein-13), Human

Product data:

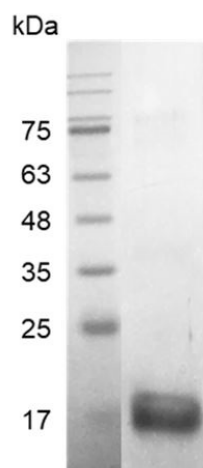
Product Type:	Recombinant Proteins
Description:	Recombinant BMP-13 (Bone morphogenetic protein-13), Human
Species:	Human
Expression Host:	E. coli
Expression cDNA Clone or AA Sequence:	MTAFASRHHGKRHHGKKSRLRCSKKPLHVNFKELGWDDWIIAPLEYEAYHCEGVCDFPLRSHLEPTNHAIQTLMNSMDPGSTPPSCCVPTKLTPI SILYIDAGNNVYKQYEDMVVESCGR with polyhistidine tag at the C-terminus.
Tag:	His Tag (C-term)
Predicted MW:	The protein has a calculated MW of 14.50 kDa. The protein migrates as 17 kDa under reducing condition (SDS-PAGE analysis).
Purity:	>98% as determined by SDS-PAGE.
Buffer:	The protein was lyophilized from a 0.2 µm filtered solution containing 20 mM sodium citrate, 0.2 M NaCl, pH 3.5.
Bioactivity:	Measure by its ability to induce alkaline phosphatase production by ATDC5 cells. The ED ₅₀ for this effect is 63-240 ng/mL.
Endotoxin:	<0.1 EU per 1 µg of the protein by the LAL method.
Reconstitution Method:	Centrifuge at 3000 rpm for 5 mins before opening. It is recommended to reconstitute the lyophilized protein in sterile H ₂ O to a concentration not less than 100 µg/mL and incubate the stock solution at room temperature for at least 20 mins to ensure sufficient re-dissolved. Do Not Vortex! Vigorous shaking may impair the biological activity of the protein.
Applications:	Cell culture
Storage:	Lyophilized protein should be stored at -20°C for 1 year. Upon reconstitution, store at 2°C to 8°C for up to 1 week. Further dilute in a buffer containing a carrier protein or stabilizer (e.g. 0.1% BSA, 10%FBS, 5%HSA or 5% trehalose solution), protein aliquots should be stored at -20°C or -80°C for 3-6 months. Avoid repeated freeze/thaw cycles.
UniProt ID:	Q6KF10
Synonyms:	subunit (CLMF p35), NK cell Stimulating Factor Chain 1



[View online »](#)

Summary:

Bone Morphogenetic Protein-13 (BMP-13), known as Growth differentiation factor 6 (GDF6), is an extracellular multifunctional cytokine that is also a member of the TGF β family. BMP-13 can bind with the TGF β receptor and induce SMAD protein signal transduction. BMP-13 is a regulatory protein that can affect the growth and differentiation of developing embryos. Moreover, it plays a role in regulating the patterning of the ectoderm and controlling eye development.

Product images:

SDS- PAGE analysis of recombinant human BMP-13