

Product datasheet for **TP724007**

CD162 (SELPLG) Human Recombinant Protein

Product data:

Product Type:	Recombinant Proteins
Description:	Human CD162 Protein, His Tag
Species:	Human
Expression Host:	HEK293
Expression cDNA Clone or AA Sequence:	CD162□Leu18-Cys320□+6×His tag
Tag:	C- 6×His
Predicted MW:	31.4 kDa
Purity:	> 95%
Buffer:	Lyophilized from sterile PBS, pH 7.4. Normally 5% - 8% trehalose is added as protectants before lyophilization
Reconstitution Method:	Reconstitute with deionized water
Preparation:	Affinity purification
Storage:	Store the lyophilized protein at -20°C. After reconstitution, store the protein at -80°C for 12 months. Avoid repeated freezing and thawing.
Stability:	12 months from date of despatch
Locus ID:	6404
UniProt ID:	Q14242
Summary:	This gene encodes a glycoprotein that functions as a high affinity counter-receptor for the cell adhesion molecules P-, E- and L- selectin expressed on myeloid cells and stimulated T lymphocytes. As such, this protein plays a critical role in leukocyte trafficking during inflammation by tethering of leukocytes to activated platelets or endothelia expressing selectins. This protein requires two post-translational modifications, tyrosine sulfation and the addition of the sialyl Lewis x tetrasaccharide (sLex) to its O-linked glycans, for its high-affinity binding activity. Aberrant expression of this gene and polymorphisms in this gene are associated with defects in the innate and adaptive immune response. Alternate splicing results in multiple transcript variants.



[View online »](#)

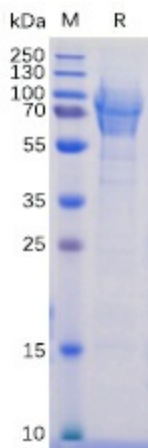
Product images:

Figure 1. Human CD162 Protein, His Tag on SDS-PAGE under reducing condition.