

## Product datasheet for **TP723997**

### S Protein SARS-CoV-2 Recombinant Protein

#### Product data:

Product Type:	Recombinant Proteins
Description:	SARS-CoV-2 (2019-nCoV) S protein RBD, mFc-His Tag
Species:	SARS-CoV-2
Expression Host:	HEK293
Expression cDNA Clone or AA Sequence:	S protein RBD□Arg319-Phe541□+mFc□Pro99-Lys330□+6×His tag
Tag:	C-Mouse Fc and 6×His
Predicted MW:	52.2 kDa
Purity:	> 95%
Buffer:	Lyophilized from sterile PBS, pH 7.4. Normally 5% - 8% trehalose is added as protectants before lyophilization
Reconstitution Method:	Reconstitute with deionized water
Preparation:	Affinity purification
Applications:	ELISA
Storage:	Store the lyophilized protein at -20°C. After reconstitution, store the protein at -80°C for 12 months. Avoid repeated freezing and thawing.
Stability:	12 months from date of despatch
Locus ID:	43740568
Summary:	SARS-CoV-2 (Severe Acute Respiratory Syndrome Coronavirus 2) also known as Covid19 (2019 Novel Coronavirus) is a virus that causes illnesses ranging from the common cold to severe diseases. The spike protein is a type I transmembrane protein containing two subunits, S1 and S2. S1 mainly contains a receptor binding domain (RBD), which accounts for recognizing the cell surface receptor, ACE2. S2 contains basic elements needed for the membrane fusion. Recent publications indicate that S1-RBD domain can induce virus neutralizing-antibody and T cell response.
Protein Families:	ELISA



[View online »](#)

Product images:

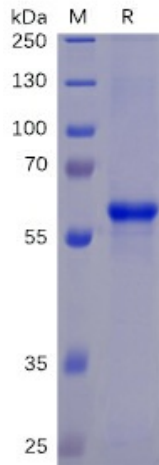


Figure 1. SARS-CoV-2 (2019-nCoV) S protein RBD, mFc-His Tag on SDS-PAGE under reducing condition.

S-RBD, mFc-His Tagged protein ELISA

0.2 µg of S-RBD, mFc-His Tagged protein per well

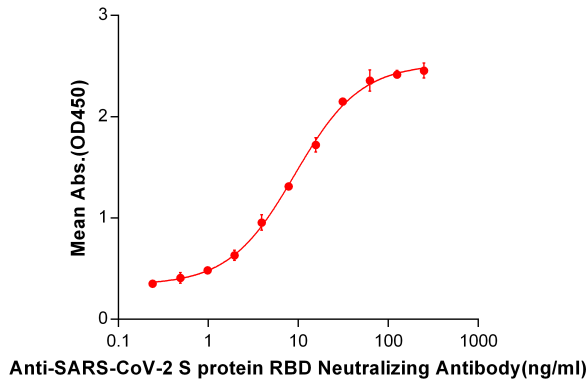


Figure 2. ELISA plate pre-coated by 2 µg/ml (100 µl/well) SARS-CoV-2 (2019-nCoV) S protein RBD, mFc-His tagged protein (TP723997) can bind Anti-SARS-CoV-2 S protein RBD Neutralizing Antibody (A neutralizing monoclonal antibody clone currently under clinical investigation from collaboration company) in a linear range of 0.24-9.141 ng/ml.

**S-RBD, mFc-His Tagged protein ELISA**

0.2 µg of S-RBD, mFc-His Tagged protein per well

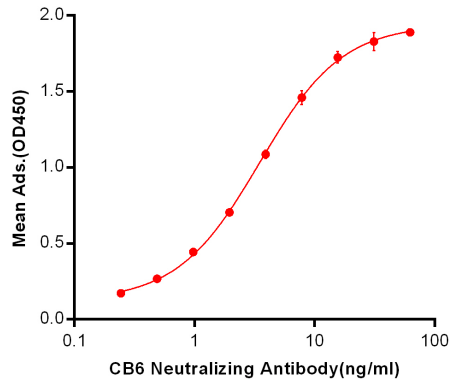


Figure 3. ELISA plate pre-coated by 2 µg/ml (100 µl/well) S-RBD, mFc-His tagged protein (TP723997) can bind Anti-SARS-CoV-2 Neutralizing antibody(CB6) ([TA355203]) in a linear range of 0.24-15.62 ng/ml.

**S-RBD, mFc-His Tagged protein ELISA**

0.2 µg of S-RBD, mFc-His Tagged protein per well

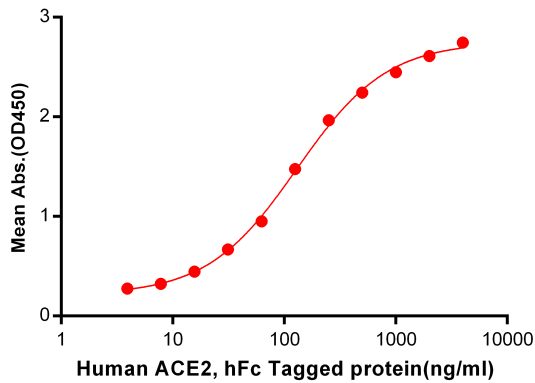


Figure 4. ELISA plate pre-coated by 2 µg/ml (100 µl/well) S-RBD, mFc-His tagged protein (TP723997) can bind Human ACE2, hFc Tagged protein [TP723981] in a linear range of 0.488-49.83 ng/ml.