

## Product datasheet for **TP723995**

### SIGLEC15 Human Recombinant Protein

#### Product data:

Product Type:	Recombinant Proteins
Description:	Human SIGLEC15 Protein, mFc-His Tag
Species:	Human
Expression Host:	HEK293
Expression cDNA Clone or AA Sequence:	SIGLEC15[Phe20-Thr263]+mFc[Pro99-Lys330]+6×His tag
Tag:	C-Mouse Fc and 6×His
Predicted MW:	53.6 kDa
Purity:	> 95%
Buffer:	Lyophilized from sterile PBS, pH 7.4. Normally 5% - 8% trehalose is added as protectants before lyophilization
Reconstitution Method:	Reconstitute with deionized water
Preparation:	Affinity purification
Storage:	Store the lyophilized protein at -20°C. After reconstitution, store the protein at -80°C for 12 months. Avoid repeated freezing and thawing.
Stability:	12 months from date of despatch
Locus ID:	284266
UniProt ID:	<a href="#">Q6ZMC9</a>
Summary:	SIGLEC15 (Sialic Acid Binding Ig Like Lectin 15) is a Protein Coding gene. Diseases associated with SIGLEC15 include Osteoporosis, Juvenile and Osteoporosis. Among its related pathways are Innate Immune System and RET signaling. An important paralog of this gene is SIGLEC1.



[View online »](#)

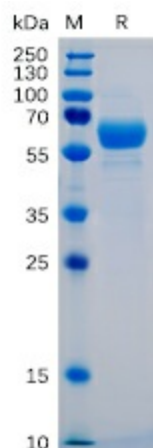
**Product images:**

Figure 1. Human SIGLEC15 Protein, mFc-His Tag on SDS-PAGE under reducing condition.