

Product datasheet for **TP723992**

SIGLEC10 Human Recombinant Protein

Product data:

Product Type:	Recombinant Proteins
Description:	Human SIGLEC10 Protein, His Tag
Species:	Human
Expression Host:	HEK293
Expression cDNA Clone or AA Sequence:	SIGLEC10[Met17-Thr546]+6×His tag
Tag:	C-6×His
Predicted MW:	59.0 kDa
Purity:	> 95%
Buffer:	Lyophilized from sterile PBS, pH 7.4. Normally 5% - 8% trehalose is added as protectants before lyophilization
Reconstitution Method:	Reconstitute with deionized water
Preparation:	Affinity purification
Storage:	Store the lyophilized protein at -20°C. After reconstitution, store the protein at -80°C for 12 months. Avoid repeated freezing and thawing.
Stability:	12 months from date of despatch
Locus ID:	89790
UniProt ID:	Q96LC7
Summary:	SIGLECs are members of the immunoglobulin superfamily that are expressed on the cell surface. Most SIGLECs have 1 or more cytoplasmic immune receptor tyrosine-based inhibitory motifs, or ITIMs. SIGLECs are typically expressed on cells of the innate immune system, with the exception of the B-cell expressed SIGLEC6 (MIM 604405).



[View online »](#)

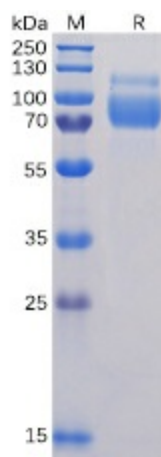
Product images:

Figure 1. Human SIGLEC10 Protein, His Tag on SDS-PAGE under reducing condition.