

Product datasheet for **TP723982**

IL2 Receptor beta (IL2RB) Human Recombinant Protein

Product data:

Product Type:	Recombinant Proteins
Description:	Human IL2RB Protein, His Tag
Species:	Human
Expression Host:	HEK293
Expression cDNA Clone or AA Sequence:	IL2RB[Ala27-Asp239]+6×His tag
Tag:	C-6×His
Predicted MW:	25.4 kDa
Purity:	> 95%
Buffer:	Lyophilized from sterile PBS, pH 7.4. Normally 5% - 8% trehalose is added as protectants before lyophilization
Reconstitution Method:	Reconstitute with deionized water
Preparation:	Affinity purification
Storage:	Store the lyophilized protein at -20°C. After reconstitution, store the protein at -80°C for 12 months. Avoid repeated freezing and thawing.
Stability:	12 months from date of despatch
Locus ID:	3560
UniProt ID:	P14784



[View online »](#)

Summary:

The interleukin 2 receptor, which is involved in T cell-mediated immune responses, is present in 3 forms with respect to ability to bind interleukin 2. The low affinity form is a monomer of the alpha subunit and is not involved in signal transduction. The intermediate affinity form consists of an alpha/beta subunit heterodimer, while the high affinity form consists of an alpha/beta/gamma subunit heterotrimer. Both the intermediate and high affinity forms of the receptor are involved in receptor-mediated endocytosis and transduction of mitogenic signals from interleukin 2. The protein encoded by this gene represents the beta subunit and is a type I membrane protein. The use of alternative promoters results in multiple transcript variants encoding the same protein. The protein is primarily expressed in the hematopoietic system. The use by some variants of an alternate promoter in an upstream long terminal repeat (LTR) results in placenta-specific expression.

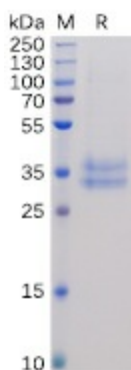
Product images:

Figure 1. Human IL2RB Protein, His Tag on SDS-PAGE under reducing condition.