

Product datasheet for **TP723981**

ACE2 Human Recombinant Protein (Angiotensin Converting Enzyme 2)

Product data:

Product Type:	Recombinant Proteins
Description:	Human ACE2 Protein, hFc Tag
Species:	Human
Expression Host:	HEK293
Expression cDNA Clone or AA Sequence:	ACE2[Gln18-Ser740]+hFc[Glu99-Ala330]
Tag:	C-Human Fc
Predicted MW:	109.7 kDa
Purity:	> 95%
Buffer:	Lyophilized from sterile PBS, pH 7.4. Normally 5% - 8% trehalose is added as protectants before lyophilization
Reconstitution Method:	Reconstitute with deionized water
Preparation:	Affinity purification
Applications:	ELISA
Storage:	Store the lyophilized protein at -20°C. After reconstitution, store the protein at -80°C for 12 months. Avoid repeated freezing and thawing.
Stability:	12 months from date of despatch
Locus ID:	59272
UniProt ID:	Q9BYF1
Summary:	The protein encoded by this gene belongs to the angiotensin-converting enzyme family of dipeptidyl carboxydipeptidases and has considerable homology to human angiotensin 1 converting enzyme. This secreted protein catalyzes the cleavage of angiotensin I into angiotensin 1-9, and angiotensin II into the vasodilator angiotensin 1-7. The organ- and cell-specific expression of this gene suggests that it may play a role in the regulation of cardiovascular and renal function, as well as fertility. In addition, the encoded protein is a functional receptor for the spike glycoprotein of the human coronaviruses SARS and HCoV-NL63.



[View online »](#)

Product images:

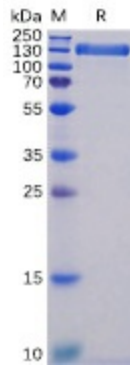


Figure 1. Human ACE2 Protein, hFc Tag on SDS-PAGE under reducing condition.

Human ACE2, hFc Tagged protein ELISA

0.2 µg of S-RBD, mFc-His Tagged protein per well

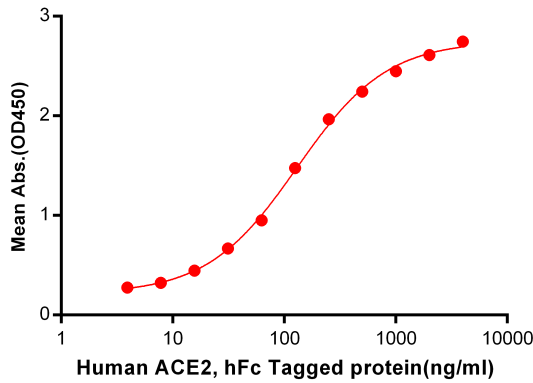


Figure 2. ELISA plate pre-coated by 2 µg/ml (100 µl/well) S-RBD, mFc-His tagged protein ([TP723997]) can bind Human ACE2, hFc Tagged protein [TP723981] in a linear range of 0.488-49.83 ng/ml.