

Product datasheet for **TP723965**

Eph receptor A3 (EPHA3) Human Recombinant Protein

Product data:

Product Type:	Recombinant Proteins
Description:	Human EPHA3 Protein, mFc-His Tag
Species:	Human
Expression Host:	HEK293
Expression cDNA Clone or AA Sequence:	EPHA3[Glu21-Gln541]+mFc[Pro99-Lys330]+6×His tag
Tag:	C-Mouse Fc and 6×His
Predicted MW:	85.9 kDa
Purity:	> 95%
Buffer:	Lyophilized from sterile PBS, pH 7.4. Normally 5% - 8% trehalose is added as protectants before lyophilization
Reconstitution Method:	Reconstitute with deionized water
Preparation:	Affinity purification
Applications:	ELISA
Storage:	Store the lyophilized protein at -20°C. After reconstitution, store the protein at -80°C for 12 months. Avoid repeated freezing and thawing.
Stability:	12 months from date of despatch
Locus ID:	2042
UniProt ID:	P29320
Summary:	This gene belongs to the ephrin receptor subfamily of the protein-tyrosine kinase family. EPH and EPH-related receptors have been implicated in mediating developmental events, particularly in the nervous system. Receptors in the EPH subfamily typically have a single kinase domain and an extracellular region containing a Cys-rich domain and 2 fibronectin type III repeats. The ephrin receptors are divided into 2 groups based on the similarity of their extracellular domain sequences and their affinities for binding ephrin-A and ephrin-B ligands. This gene encodes a protein that binds ephrin-A ligands. Two alternatively spliced transcript variants have been described for this gene.



[View online »](#)

Product images:

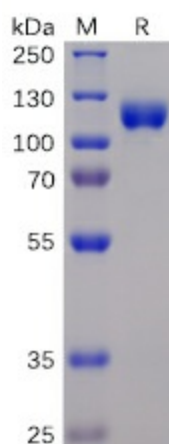


Figure 1. Human EPHA3 Protein, mFc-His Tag on SDS-PAGE under reducing condition.

Human EPHA3, mFc-His Tagged protein ELISA

0.2 µg of EPHA3, mFc-His Tagged protein per well

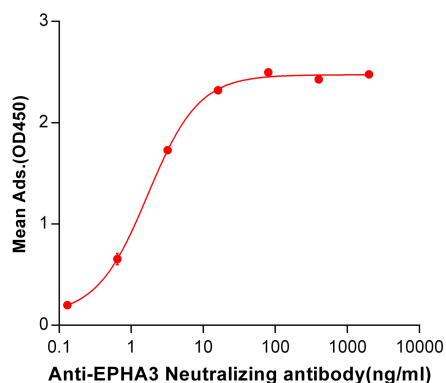


Figure 2. ELISA plate pre-coated by 2 µg/ml (100 µl/well) Human EPHA3, mFc-His tagged protein (TP723965) can bind Anti-EPHA3 Neutralizing antibody BME100019 in a linear range of 0.13-16.0 ng/ml.