

Product datasheet for **TP723956**

Flt3l Human Recombinant Protein

Product data:

Product Type:	Recombinant Proteins
Description:	Human FLT3 Ligand Protein, mFc-His Tag
Species:	Human
Expression Host:	HEK293
Expression cDNA Clone or AA Sequence:	FLT3 Ligand□Thr27-Pro185□+mFc□Pro99-Lys330□+6×His tag
Tag:	C-Mouse Fc and 6×His
Predicted MW:	45.6 kDa
Purity:	> 95%
Buffer:	Lyophilized from sterile PBS, pH 7.4. Normally 5% - 8% trehalose is added as protectants before lyophilization
Reconstitution Method:	Reconstitute with deionized water
Preparation:	Affinity purification
Applications:	ELISA
Storage:	Store the lyophilized protein at -20°C. After reconstitution, store the protein at -80°C for 12 months. Avoid repeated freezing and thawing.
Stability:	12 months from date of despatch
Locus ID:	14256
UniProt ID:	P49772



[View online »](#)

Summary:

FMS-like tyrosine kinase 3 ligand (Flt-3 Ligand) is also known as FL, Flt3L and FLT3LG, is an α -helical cytokine that promotes the differentiation of multiple hematopoietic cell lineages. FLT3LG is expressed as a noncovalentlylinked dimer by T cells and bone marrow and thymic fibroblasts. Each 36 kDa chain carries approximately 12 kDa of N- and O- linked carbohydrates. FLT3LG is structurally homologous to stem cell factor (SCF) and colony stimulating factor 1 (CSF-1). FLT3LG acts as a growth factor that increases the number of immune cells by activating the hematopoietic progenitors. It also induces the mobilization of the hematopoietic progenitors and stem cells in vivo which may help the system to kill cancer cells. FLT3LG induces the expansion of monocytes and immature dendritic cells as well as early B cell lineage differentiation. FLT3LG cooperates with IL2, IL6, IL7, and IL15 to induce NK cell development and with IL3, IL7 and IL11 to induce terminal B cell maturation. Animal studies also show FLT3LG to reduce the severity of experimentally induced allergic inflammation. FLT3LG is crucial for steady-state pDC and cDC development. A lack of FLT3L results in low levels of DCs.

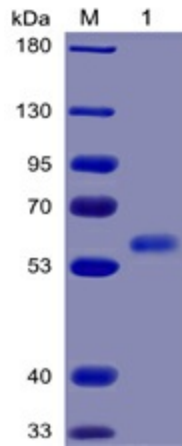
Product images:


Figure 1. Human FLT3 Ligand Protein, mFc-His Tag on SDS-PAGE under reducing condition.

Human FLT3 Ligand, mFc-His Tagged protein ELISA

0.2 μ g of Human FLT3 Ligand, mFc-His Tagged protein per well

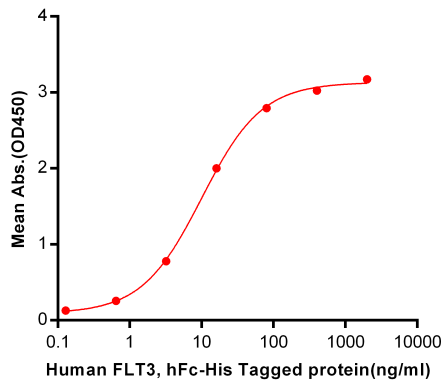


Figure 2. ELISA plate pre-coated by 2 μ g/ml (100 μ l/well) Human FLT3LG, mFc-His tagged protein (TP723956) can bind Human FLT3, hFc-His tagged protein ([TP723930]) in a linear range of 0.128-10.02 ng/ml.