

## Product datasheet for **TP723955**

### IL6 Human Recombinant Protein

#### Product data:

Product Type:	Recombinant Proteins
Description:	Human IL6 Protein, mFc-His Tag
Species:	Human
Expression Host:	HEK293
Expression cDNA Clone or AA Sequence:	IL6□Val30-Met212□+mFc□Pro99-Lys330□+6×His tag
Tag:	C-Mouse Fc and 6×His
Predicted MW:	47.9 kDa
Purity:	> 95%
Buffer:	Lyophilized from sterile PBS, pH 7.4. Normally 5% - 8% trehalose is added as protectants before lyophilization
Reconstitution Method:	Reconstitute with deionized water
Preparation:	Affinity purification
Applications:	ELISA, Flow Cyt
Storage:	Store the lyophilized protein at -20°C. After reconstitution, store the protein at -80°C for 12 months. Avoid repeated freezing and thawing.
Stability:	12 months from date of despatch
Locus ID:	3569
UniProt ID:	<a href="#">P05231</a>
Summary:	This gene encodes a cytokine that functions in inflammation and the maturation of B cells. In addition, the encoded protein has been shown to be an endogenous pyrogen capable of inducing fever in people with autoimmune diseases or infections. The protein is primarily produced at sites of acute and chronic inflammation, where it is secreted into the serum and induces a transcriptional inflammatory response through interleukin 6 receptor, alpha. The functioning of this gene is implicated in a wide variety of inflammation-associated disease states, including susceptibility to diabetes mellitus and systemic juvenile rheumatoid arthritis. Alternative splicing results in multiple transcript variants.



[View online »](#)

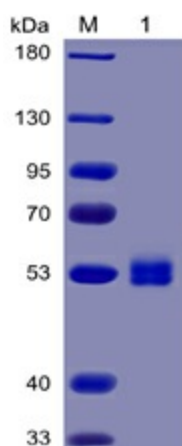
**Product images:**


Figure 1. Human IL6 Protein, mFc-His Tag on SDS-PAGE under reducing condition.

**Human IL6, mFc-His Tagged protein ELISA**

0.2 µg of Human IL6, mFc-His Tagged protein per well

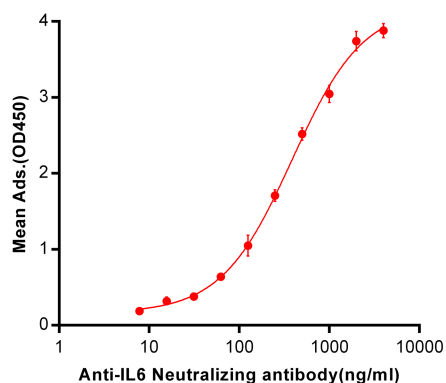


Figure 2. ELISA plate pre-coated by 2 µg/ml (100 µl/well) Human IL6, mFc-His tagged protein (TP723955) can bind Anti-IL6 Neutralizing antibody ([TA355199]) in a linear range of 7.81-386.8 ng/ml.

**Human IL6, mFc-His Tagged protein ELISA**

0.2 µg of IL6R, His Tagged protein per well

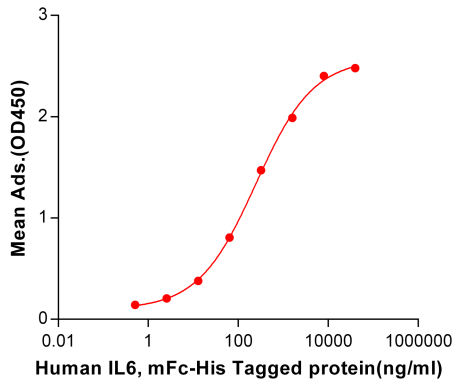


Figure 3. ELISA plate pre-coated by 2 µg/ml (100 µl/well) Human IL6R, His tagged protein (PME100109) can bind Human IL6, mFc-His tagged protein (TP723955) in a linear range of 0.512-40000 ng/ml.

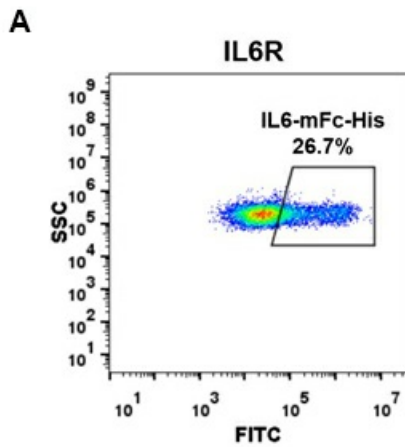


Figure 4. HEK293 cell line transfected with irrelevant protein (B) and human IL6R (A) were surface stained with Human IL6, mFc-His tagged protein (TP723955) 1µg/ml followed by Alexa 488-conjugated anti-mouse IgG secondary antibody.