

Product datasheet for **TP723953**

TIM 3 (HAVCR2) Human Recombinant Protein

Product data:

Product Type:	Recombinant Proteins
Description:	Human TIM3 Protein, mFc-His Tag
Species:	Human
Expression Host:	HEK293
Expression cDNA Clone or AA Sequence:	TIM3[Ser22-Gly202]+mFc[Pro99-Lys330]+6×His tag
Tag:	C-Mouse Fc and 6×His
Predicted MW:	47.5 kDa
Purity:	> 95%
Buffer:	Lyophilized from sterile PBS, pH 7.4. Normally 5% - 8% trehalose is added as protectants before lyophilization
Reconstitution Method:	Reconstitute with deionized water
Preparation:	Affinity purification
Applications:	ELISA
Storage:	Store the lyophilized protein at -20°C. After reconstitution, store the protein at -80°C for 12 months. Avoid repeated freezing and thawing.
Stability:	12 months from date of despatch
Locus ID:	84868
UniProt ID:	Q8TDQ0
Summary:	The protein encoded by this gene belongs to the immunoglobulin superfamily, and TIM family of proteins. CD4-positive T helper lymphocytes can be divided into types 1 (Th1) and 2 (Th2) on the basis of their cytokine secretion patterns. Th1 cells are involved in cell-mediated immunity to intracellular pathogens and delayed-type hypersensitivity reactions, whereas, Th2 cells are involved in the control of extracellular helminthic infections and the promotion of atopic and allergic diseases. This protein is a Th1-specific cell surface protein that regulates macrophage activation, and inhibits Th1-mediated auto- and alloimmune responses, and promotes immunological tolerance.



[View online »](#)

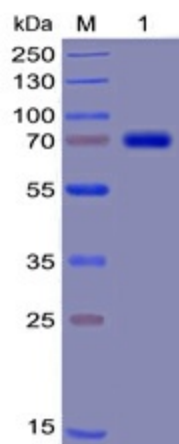
Product images:


Figure 1. Human TIM3 Protein, mFc-His Tag on SDS-PAGE under reducing condition.

Human TIM3, mFc-His Tagged protein ELISA

0.2 µg of Human TIM3, mFc-His Tagged protein per well

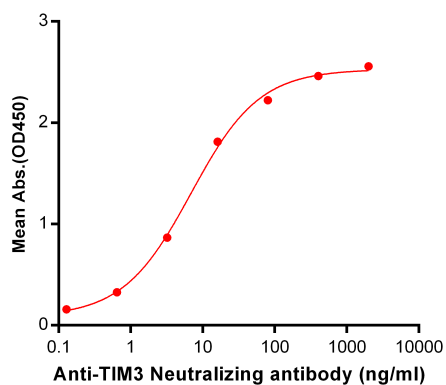


Figure 2. ELISA plate pre-coated by 2 µg/ml (100 µl/well) Human TIM3, mFc-His tagged protein (TP723953) can bind Anti-TIM3 Neutralizing antibody ([TA355200]) in a linear range of 0.64-80 ng/ml.