

Product datasheet for **TP723947**

SLAMF1 Human Recombinant Protein

Product data:

Product Type:	Recombinant Proteins
Description:	Human SLAMF1 Protein, mFc-His tag
Species:	Human
Expression Host:	HEK293
Expression cDNA Clone or AA Sequence:	SLAMF1[Ala21-Pro231]+mFc[Pro99-Lys330]+6×His tag
Tag:	C-Mouse Fc and 6×His
Predicted MW:	51.8 kDa
Purity:	> 95%
Buffer:	Lyophilized from sterile PBS, pH 7.4. Normally 5% - 8% trehalose is added as protectants before lyophilization
Reconstitution Method:	Reconstitute with deionized water
Preparation:	Affinity purification
Storage:	Store the lyophilized protein at -20°C. After reconstitution, store the protein at -80°C for 12 months. Avoid repeated freezing and thawing.
Stability:	12 months from date of despatch
Locus ID:	6504
UniProt ID:	Q13291
Summary:	SLAMF1 (Signaling Lymphocytic Activation Molecule Family Member 1) is a Protein Coding gene. Diseases associated with SLAMF1 include Measles and Subacute Sclerosing Panencephalitis. Among its related pathways are Dendritic Cells Developmental Lineage Pathway and T Cell Co-Signaling Pathway: Ligand-Receptor Interactions. Gene Ontology (GO) annotations related to this gene include antigen binding. An important paralog of this gene is LY9.



[View online »](#)

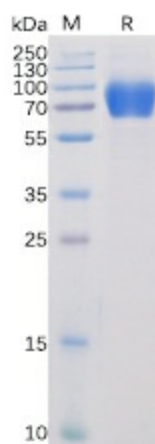
Product images:

Figure 1. Human SLAMF1 Protein, mFc-His Tag on SDS-PAGE under reducing condition.